



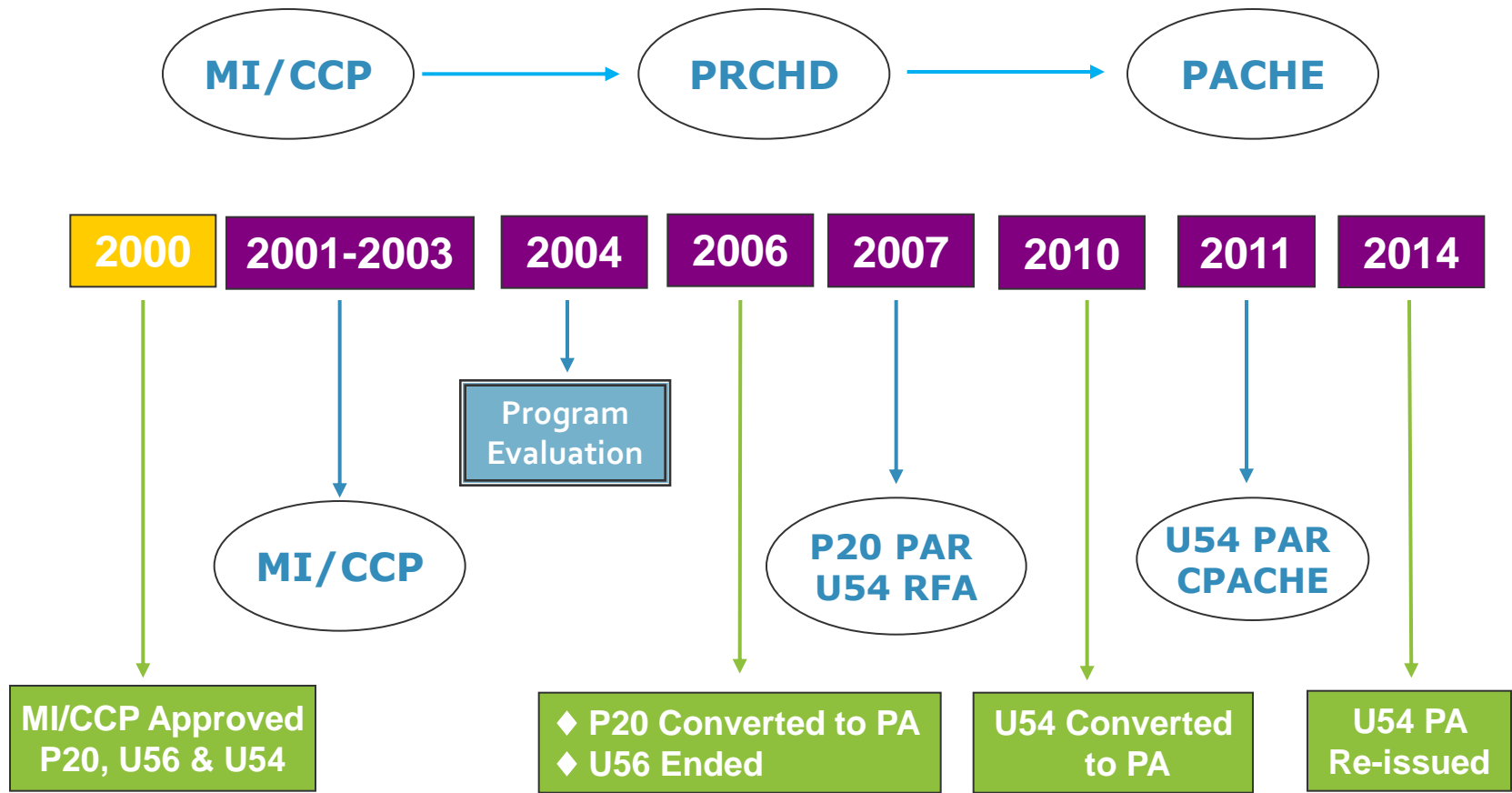
Partnerships to Advance Cancer Health Equity (PACHE) Investigators Workshop

NIH Neuroscience Center
Rockville, Maryland
July 28-29, 2014

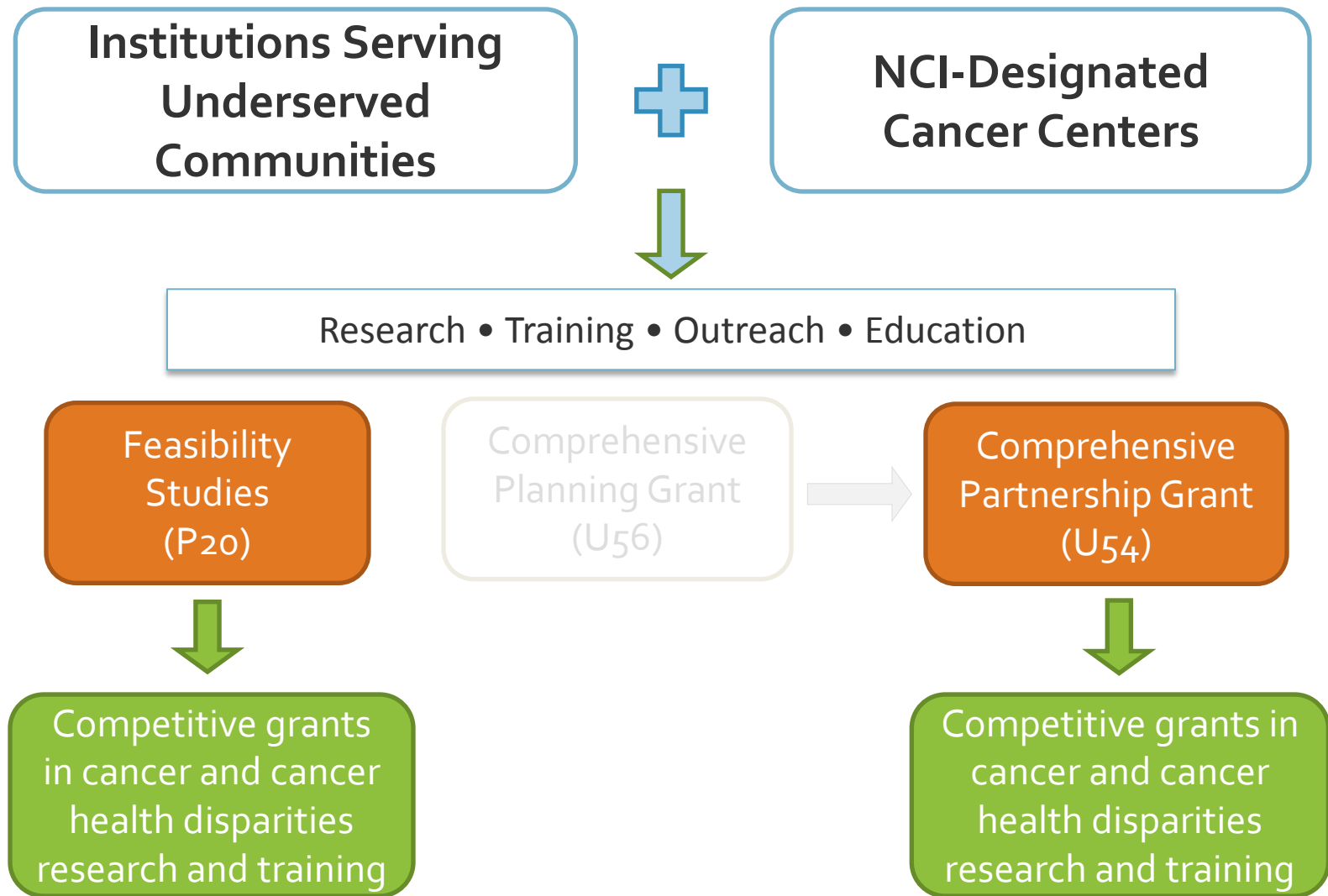
PACHE Progress: Where are We Now?

Dr. Peter Ogunbiyi
Diversity Training Branch
CRCHD/NCI/NIH

Program Development History

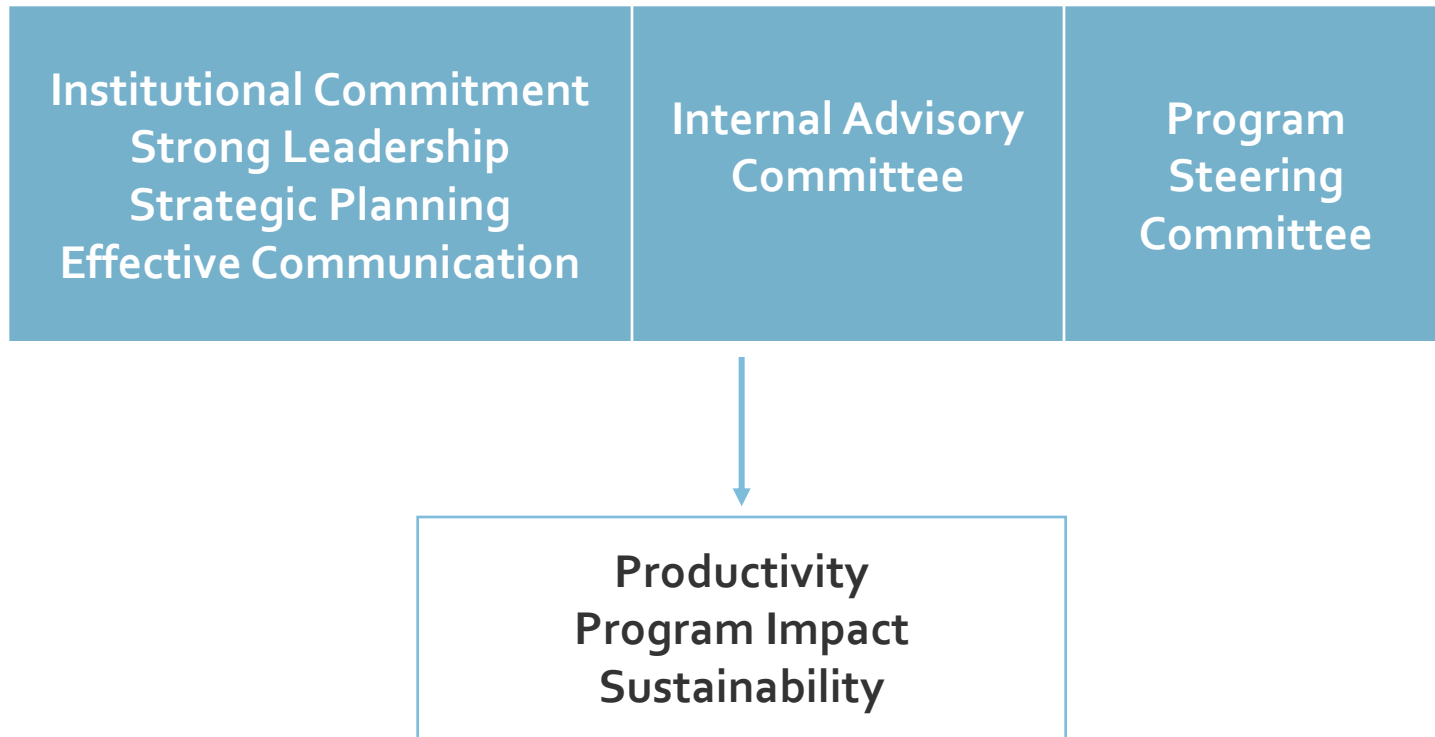


Partnership Program Structure





Building Capacity Within PACHE Program



Active P20 Partnerships – FY 2014

Cancer Center	Institutions Serving Underserved Communities
Vanderbilt University Ingram Cancer Center	Meharry Medical College
UCLA Jonsson Cancer Center	Parents Against Cancer Community Based Organization
Northwestern University Cancer Center	Northeastern Illinois University
Medical University of South Carolina Hollings Cancer Center	South Carolina State University
University of California-Irvine, Chao Family Cancer Center	California State University at Fullerton
University of Texas HSC-San Antonio, Cancer Therapy and Research Center	University of Texas at San Antonio
The University of Chicago Medical Center	Chicago State University
Sanford Burnham Institute for Medical Research Cancer Center	California State University, Fresno

Active U54 Partnerships – FY 2014

Cancer Center	Institutions Serving Underserved Communities
Dana-Farber Cancer Res. Institute, Harvard University	University of Massachusetts, Boston
UCLA Jonsson Cancer Center	Charles Drew University of Medicine and Science
University of North Carolina Lineberger Cancer Center	North Carolina Central University
UCSD Moores Cancer Center	San Diego State University
University of Arizona Cancer Center	Northern Arizona University
University of Hawaii Cancer Center	University of Guam
Vanderbilt University-Ingram Cancer Center	Meharry Medical College
	Tennessee State University
University of Alabama at Birmingham Cancer Center	Morehouse School of Medicine
	Tuskegee University
H. L. Moffitt Cancer Research Center	Ponce School of Medicine and PH Sciences
Fred Hutchinson Cancer Research Center	New Mexico State Univ., La Cruces
Memorial Sloan-Kettering Cancer Center	City College of New York
University of Texas MD Anderson Cancer Center	UPR Cancer Ctr., Medical Sciences Campus



Summary of Program Accomplishments

1. Increase in cancer research capacity of participating Minority Serving Institutions (MSI)
 - a) Development of research infrastructure
 - b) Development of cancer research program
 - c) Increase in critical mass of investigators in cancer research
 - d) Establishment of shared resources
 - i. Biostatistics
 - ii. Biobanks
 - iii. MSI investigators as Associate Members of CCs
2. Increase in competitive grant awards
3. Increase in peer-reviewed publications
4. Increase in number of students trained in cancer research



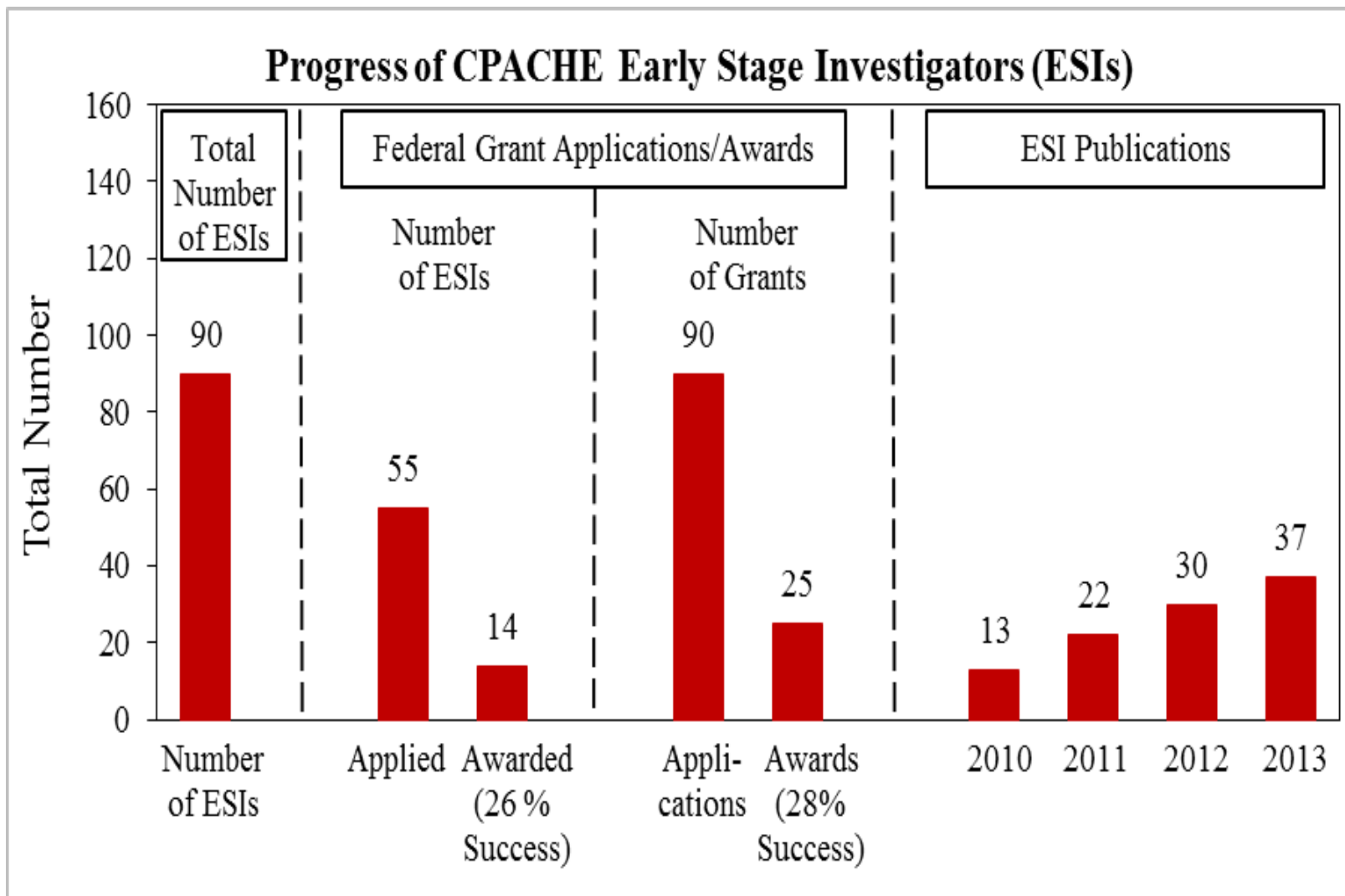
Summary of Program Accomplishments (cont'd)

5. Development of education and training programs.
 - a) MPH programs
 - b) PhD for nurses
 - c) MD/PhD for physician-scientists
 - d) Fellowship programs for physicians
 - e) Bioethics for investigators and students
6. Development of curriculum in cancer and Cancer Health Disparities (CHD).
7. Increase in CHD research at participating Cancer Centers (CC).
8. Significant increase in outreach activities of CCs to their communities.
 - a) Establishment of Health Disparities Centers or Institutes by CCs
9. Participation in regional hubs for coordination of cancer and CHD research and training (GMaP).

Grant Applications and Awards by CPACHE ESIs (FY 2010-2013)

Award Type	Total Number of Applications	Number of Reviewed Applications	Number of Awards	Success Rate
K01	3	3	1	33%
K05	1	1	0	0%
K22	2	1	1	100%
K24	1	1	1	100%
R01	66	45	11	24%
R03	6	4	1	25%
R13	6	6	3	50%
R21	33	23	4	17%
U01	4	4	1	25%
UH2	2	2	2	100%
Total	124	90	25	28%

Progress of CPACHE ESIs – Grant Awards and Publications (FY 2010-2013)





What Next?

1. Budget
2. Mutual Benefits
3. Communication
4. Scientific quality of research projects
5. Possible inclusion of middle and high school students in education programs
6. Development of biospecimen collection and biobanks
7. Programs on accrual in clinical trials
8. Program evaluation
9. Tracking of trainees
10. Impact of CPACHE on CHD in communities being served
11. Program sustainability

National Cancer Institute



U.S. DEPARTMENT
OF HEALTH AND
HUMAN SERVICES
National Institutes
of Health

THANK YOU