

# *Division of Cancer Control and Population Sciences (DCCPS)*

*Bradford W. Hesse*

*Chief, HCIRB, Behavioral Research Program*



# NATIONAL CANCER INSTITUTE

## Division of Cancer Control & Population Sciences

### DCCPS Organization and Leadership

- Programs:
  - Implementation science
  - Health disparities
  - Healthcare delivery
  - Surveillance
  - Epidemiology and genomics
  - Behavioral research
- Office of Cancer Survivorship



**Healthcare Delivery Research Program**  
Dr. Paul Jacobson, ASSOCIATE DIRECTOR

**Healthcare Delivery Research Program**  
Dr. Ann Geiger, DEPUTY ASSOCIATE DIRECTOR

**Healthcare Assessment Research**  
Dr. Paul Dorit-Ross, BRANCH CHIEF

**Health Systems and Interventions Research**  
Dr. Sarah Kobrin, BRANCH CHIEF

**Outcomes Research**  
Dr. Ashley Wilder Smith, BRANCH CHIEF

**Surveillance Research Program**  
Dr. Lynne Paribberthy, ASSOCIATE DIRECTOR

**Surveillance Research Program**  
Dr. Kathleen Cronin, DEPUTY ASSOCIATE DIRECTOR

**Data Quality, Analysis, and Interpretation**  
Dr. Serban Negoita, BRANCH CHIEF

**Surveillance Informatics**  
Dr. Paul Fearn, BRANCH CHIEF

**Data Analytics**  
Dr. Angela Marotto, BRANCH CHIEF

**Statistical Research and Applications**  
Dr. Eric Fouer, BRANCH CHIEF

**Epidemiology and Genomics Research Program**  
Dr. Kathy Helzlsouer, ASSOCIATE DIRECTOR

**Epidemiology and Genomics Research Program**  
Dr. Emily Harris, DEPUTY ASSOCIATE DIRECTOR

**Methods and Technologies**  
Dr. Mukesh Verma, BRANCH CHIEF

**Environmental Epidemiology**  
Dr. Gary Ellison, BRANCH CHIEF

**Genomic Epidemiology**  
Dr. Elizabeth Gillanders, BRANCH CHIEF

**Clinical and Translational Epidemiology**  
Dr. Andrew Freedman, BRANCH CHIEF

**Risk Factor Assessment**  
Dr. Amy Subar, ACTING BRANCH CHIEF

**Behavioral Research Program**  
Dr. William Klein, ASSOCIATE DIRECTOR

**Behavioral Research Program**  
Dr. Linda Nebeling, DEPUTY ASSOCIATE DIRECTOR

**Basic Biobehavioral and Psychological Sciences**  
Dr. Paige Groen, BRANCH CHIEF

**Health Behaviors Research**  
Dr. Susan Czajkowski, BRANCH CHIEF

**Health Communication and Informatics Research**  
Dr. Bradford Hesse, BRANCH CHIEF

**Tobacco Control Research**  
Dr. Michele Bloch, BRANCH CHIEF

<https://cancercontrol.cancer.gov/>

# Division of Cancer Control and Population Sciences

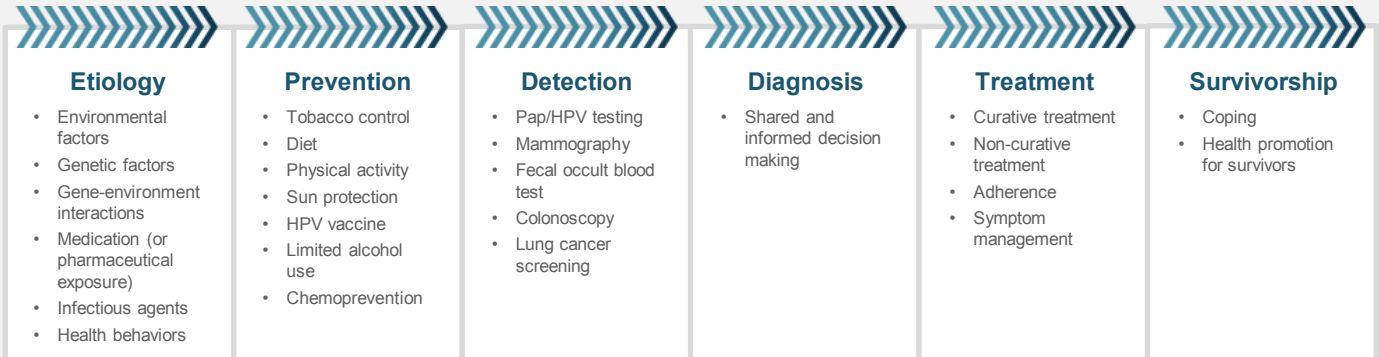
DCCPS plays a central role for research on:

- Quality of cancer care
- Surveillance
- Geographic information systems
- Statistical methods
- Communication science
- Comparative effectiveness research
- Obesity and tobacco control
- Translation of research into practice



# THE CANCER CONTROL CONTINUUM

## FOCUS



## CROSSCUTTING AREAS

**Communications**

**Surveillance**

**Health Disparities**

**Decision Making**

**Dissemination of Evidence-based Interventions**

**Health Care Delivery**

**Epidemiology**

**Measurement**

# Health Disparities FOAs

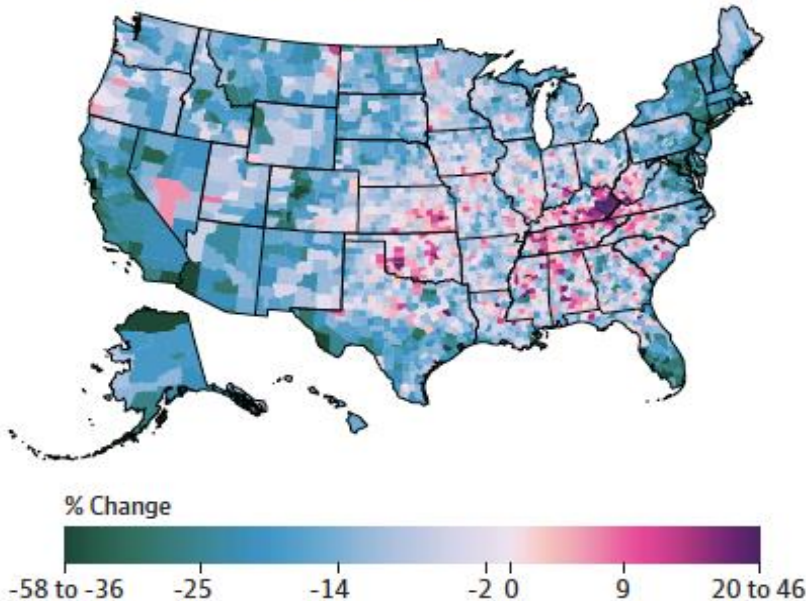
Shobha Srinivasan, PhD  
Health Disparities  
Research Coordinator



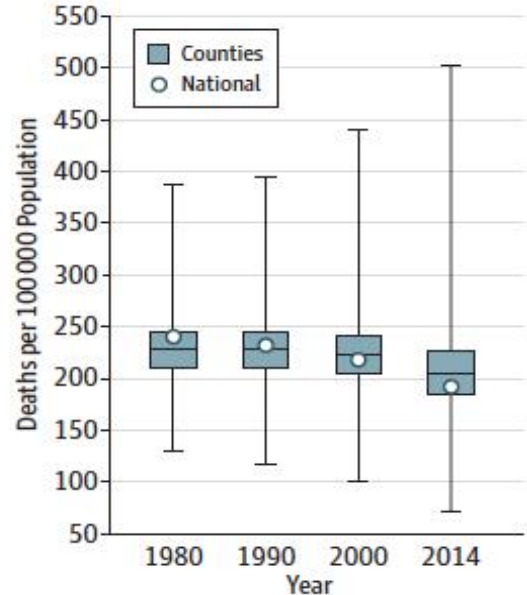
Title	Announcement # / Mechanism(s)	Expiration Date	Program Contact
Academic Research Enhancement Award	<a href="#">PA-18-504</a> (Parent R15)	January 8, 2021	<a href="#">Shobha Srinivasan</a> 240-276-6938 <a href="mailto:ss688k@nih.gov">ss688k@nih.gov</a>
Intervention Research to Improve Native American Health (R01 Clinical Trial Optional)	<a href="#">PAR-17-496</a> (R01)	May 15, 2020	<a href="#">Shobha Srinivasan</a> 240-276-6938 <a href="mailto:ss688k@nih.gov">ss688k@nih.gov</a>
Research to Improve Native American Health (R21 Clinical Trials Optional)	<a href="#">PAR-17-464</a> (R21)		
Addressing Health Disparities through Effective Interventions Among Immigrant Populations	<a href="#">PA-18-284</a> (R01) <a href="#">PA-18-285</a> (R21)	January 8, 2020	<a href="#">Shobha Srinivasan</a> 240-276-6938 <a href="mailto:ss688k@nih.gov">ss688k@nih.gov</a>
Collaborative Minority Health and Health Disparities Research with Tribal Epidemiology Centers	<a href="#">PAR-17-483</a> (R21) <a href="#">PAR-17-484</a> (R01)	December 5, 2019	<a href="#">Shobha Srinivasan</a> 240-276-6938 <a href="mailto:ss688k@nih.gov">ss688k@nih.gov</a>
Surgical Disparities Research	<a href="#">PAR-18-288</a> (R01) <a href="#">PAR-18-289</a> (R21)	June 8, 2019	<a href="#">Brenda A. Adjei</a> 240-276-6185 <a href="mailto:adjeiba@mail.nih.gov">adjeiba@mail.nih.gov</a>
Mechanisms of Disparities in Chronic Liver Diseases and Cancer	<a href="#">PAR-17-150</a> (R21) <a href="#">PAR-17-151</a> (R01)	April 5, 2019	<a href="#">Tram Lam</a> 240-276-6967 <a href="mailto:lamt@mail.nih.gov">lamt@mail.nih.gov</a>
The Health of Sexual and Gender Minority (SGM) Populations	<a href="#">PA-18-210</a> (R15) <a href="#">PA-18-037</a> (R01) <a href="#">PA-18-054</a> (R03) <a href="#">PA-18-040</a> (R21)	September 8, 2018	<a href="#">Shobha Srinivasan</a> 240-276-6938 <a href="mailto:ss688k@nih.gov">ss688k@nih.gov</a>

# Critical Highlight: Rural Disparities

**B** Percent change in age-standardized mortality rate from neoplasms between 1980 and 2014, both sexes



**C** Age-standardized mortality rate from neoplasms over time



Source: Mokdad AH, et al. Trends and Patterns of Disparities in Cancer Mortality Among US Counties, 1980-2014. JAMA. 2017;317(4):388-406. doi:10.1001/jama.2016.20324

# Critical Highlight: Rural Disparities

## Healthcare Delivery Research Program

- RFA-CA-18-026: Improving the Reach and Quality of Cancer Care in Rural Populations

Sallie Weaver,  
PhD, MHS



Published OnlineFirst June 9, 2017; DOI: 10.1158/1055-9965.EPI-17-0092

Commentary

### Making the Case for Investment in Rural Cancer Control: An Analysis of Rural Cancer Incidence, Mortality, and Funding Trends

Kelly D. Blake, Jennifer L. Moss, Anna Gaysynsky, Shobha Srinivasan, and Robert T. Croyle



Cancer  
Epidemiology,  
Biomarkers  
& Prevention

#### Abstract

Estimates of those living in rural counties vary from 46.2 to 59 million, or 14% to 19% of the U.S. population. Rural communities face disadvantages compared with urban areas, including higher poverty, lower educational attainment, and lack of access to health services. We aimed to demonstrate rural–urban disparities in cancer and to examine NCI-funded cancer control grants focused on rural populations. Estimates of 5-year cancer incidence and mortality from 2009 to 2013 were generated for counties at each level of the rural–urban continuum and for metropolitan versus nonmetropolitan counties, for all cancers combined and several individual cancer types. We also examined the number and foci of rural cancer control grants funded by NCI from 2011 to

2016. Cancer incidence was 447 cases per 100,000 in metropolitan counties and 460 per 100,000 in nonmetropolitan counties ( $P < 0.001$ ). Cancer mortality rates were 166 per 100,000 in metropolitan counties and 182 per 100,000 in nonmetropolitan counties ( $P < 0.001$ ). Higher incidence and mortality in rural areas were observed for cervical, colorectal, kidney, lung, melanoma, and oropharyngeal cancers. There were 48 R- and 3 P-mechanism rural-focused grants funded from 2011 to 2016 (3% of 1,655). Further investment is needed to disentangle the effects of individual-level SES and area-level factors to understand observed effects of rurality on cancer. *Cancer Epidemiol Biomarkers Prev*; 1–6. ©2017 AACR.

# Critical Highlight: Connecting Health

*Disconnects in health account for 70% of medical errors*



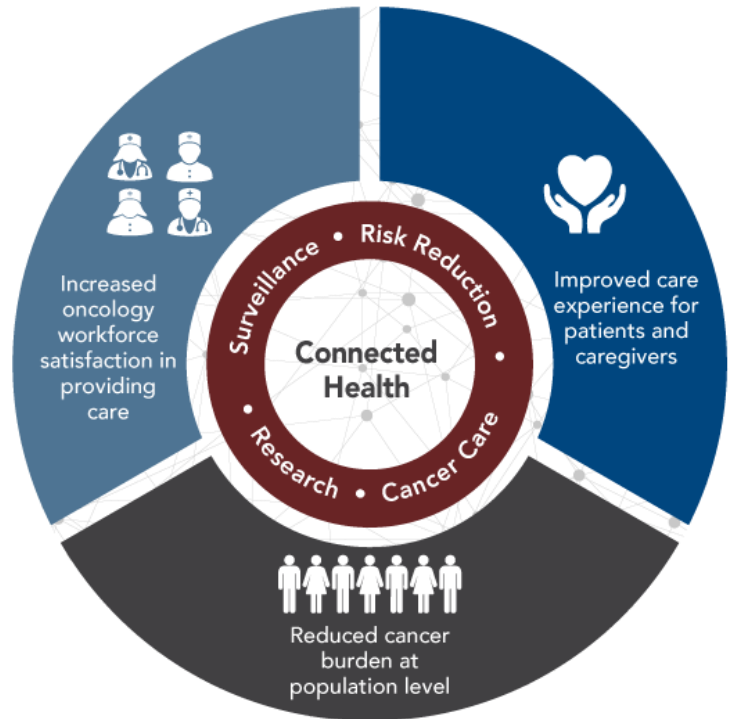
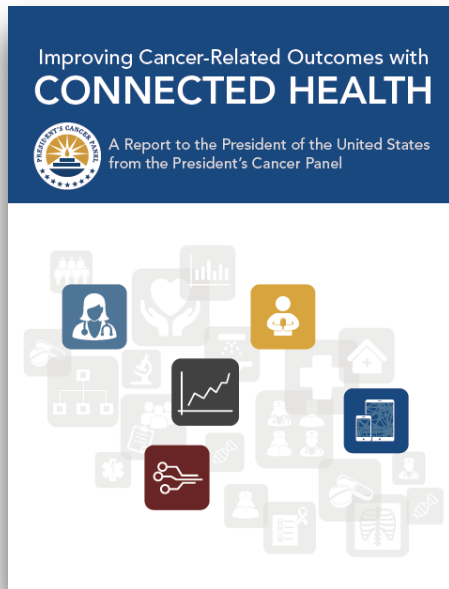
## Root Cause Information for Delay in Treatment Events Reviewed by The Joint Commission

(Resulting in death or permanent loss of function)

<b>2004 through 2014 (N=971)</b>	
<i>The majority of events have multiple root causes</i>	
Communication	787
Assessment	753
Human Factors	701
Leadership	662
Information Management	279
Continuum of Care	253
Care Planning	170
Physical Environment	147
Medication Use	74
Patient Rights	27



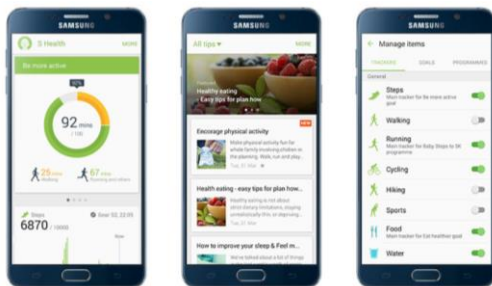
# President's Cancer Panel: 2014-2018



# Behavioral Research Program: Communication

- PA-18-638/9: Innovative Approaches to Studying Cancer Communication in the New Media Environment

Kelly Blake, Sc.D.



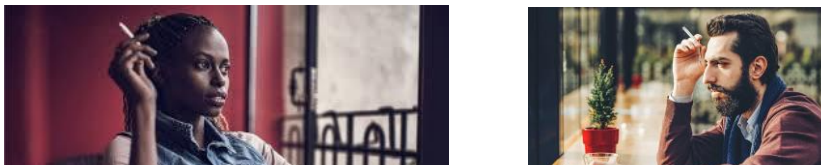
# Behavioral Research Program: Tobacco

- PAR-18-674/5: U.S. Tobacco Control Policies to Reduce Health Disparities
- PAR-18-250/1: Improving Smoking Cessation in Socioeconomically Disadvantaged Populations via Scalable Interventions

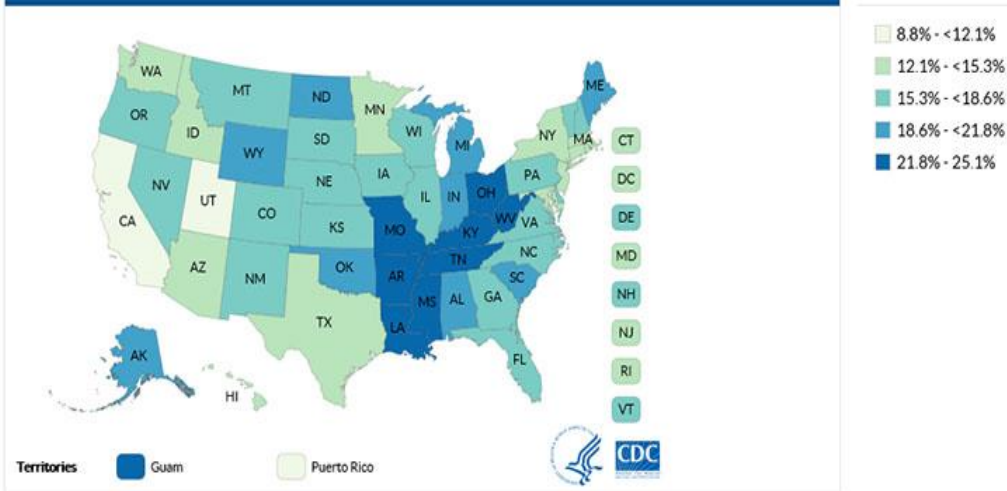
Bob Vollinger,  
M.S.P.H.



Yvonne M. Prutzman,  
Ph.D., M.P.H.



Current Cigarette Use Among Adults (Behavior Risk Factor Surveillance System) 2016



About This Map

# Healthcare Delivery Research Program

- PA-18-492/3: Using Information Technology to Support Systematic Screening and Treatment of Depression in Cancer
- PA-18-246/7: Intervening with Cancer Caregivers to Improve Patient Health Outcomes and Optimize Health Care Utilization

Gurvaneet Randhawa,  
MD, MPH

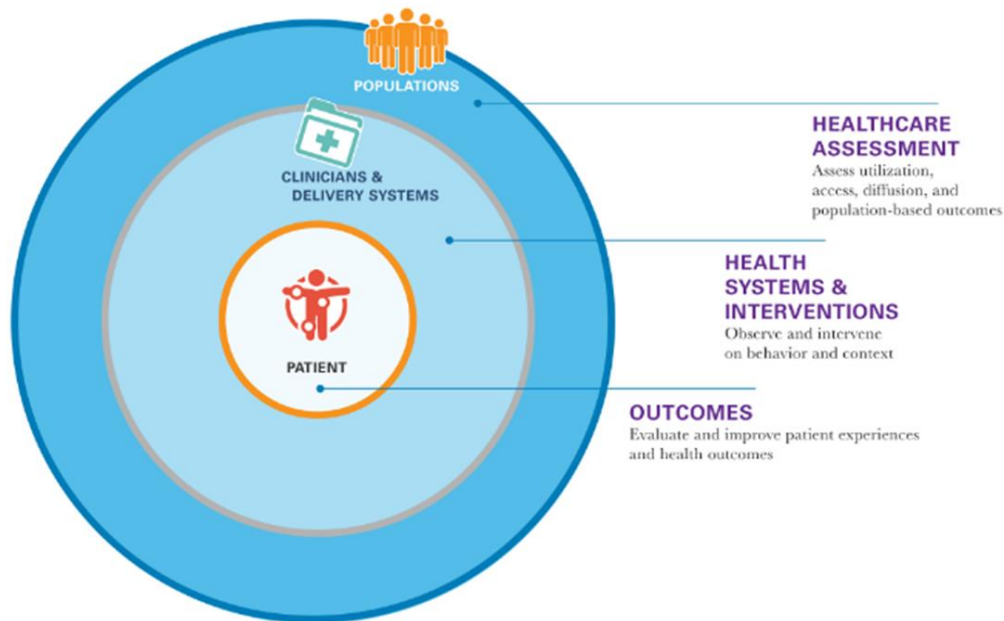


Michelle Mollica, PhD,  
MPH, RN, OCN



## HEALTHCARE DELIVERY RESEARCH PROGRAM

Advancing innovative research to improve the delivery of cancer-related care



# Cross Agency Collaboration: FCC & NCI

## FCC and NCI team up to expand broadband access to cancer care in rural Kentucky

December 26, 2017

by [John Fisher](#), [Staff Reporter](#)



July 11, 2018

### Commissioner Carr Announces \$100 Million 'Connected Care Pilot Program'

WASHINGTON, D.C.—Today, in an op-ed with Senator Roger Wicker, Commissioner Brendan Carr announced that the FCC will seek to establish a new \$100 million “Connected Care Pilot Program” to support telehealth for low-income Americans, especially those living in rural areas and veterans.

**The**  
**(FC**  
**(NC**  
**car**

**“We’re seeing a trend in telehealth towards connected care everywhere,”** said Commissioner Carr. “The FCC has long supported the deployment of broadband to healthcare facilities, but advances in technology mean that high-tech, life-saving services are no longer limited to the confines of connected, brick-and-mortar facilities. I saw this firsthand when I visited Mississippi six months ago and learned about a remote patient monitoring trial that improved outcomes for diabetes patients living in the rural Mississippi Delta. Since then, my office has been meeting with experts in this field, visiting rural health care facilities, and working to see how the FCC can support this movement towards connected care.

**tec**

**“Given the significant cost savings and improved patient outcomes associated with connected care, we should align public policy in support of this movement in telehealth.** At the FCC, we can play a constructive role by helping to support the connectivity and deployments needed to ensure that all communities get a fair shot at benefiting from new telehealth technologies. I look forward to working with my colleagues at the FCC, federal and state partners that are active on these issues, and all stakeholders as we seek comment on establishing the Connected Care Pilot Program.”

# Visit the DCCPS Funding Page

The screenshot shows the NIH Division of Cancer Control & Population Sciences website. At the top left is the NIH logo and the text "NATIONAL CANCER INSTITUTE Division of Cancer Control & Population Sciences". To the right is a search bar with the word "SEARCH" and a magnifying glass icon. Below this is a dark navigation bar with links: Home, Program Areas, Research Portfolios, Funding Opportunities, Publications & Data, Research Emphasis, and About DCCPS. The main heading is "Funding Opportunities". Below the heading is a breadcrumb trail: Home / Funding Opportunities. The main text states: "DCCPS regularly funds new cancer control research. It also funds programs that help train people for careers in biomedical, behavioral, social, and clinical research. Explore current funding opportunities, as well as information about NIH's budget process, grant funding strategies and policies, and more." There are three featured boxes: 1. "Funding Announcements" with a megaphone icon, describing a list of currently accepting applications. 2. "For New Grantees" with a "NEW" badge icon, describing resources for new and early-stage investigators. 3. "How to Apply" with a document icon, describing application tips, forms, and instructions. At the bottom is a dark blue section titled "EXPLORE MORE FUNDING" with two sub-sections: "Grant Policies" (describing terms and conditions) and "Archives" (describing past requests since 1995).

**NIH** NATIONAL CANCER INSTITUTE  
Division of Cancer Control & Population Sciences


SEARCH

Home Program Areas Research Portfolios Funding Opportunities Publications & Data Research Emphasis About DCCPS

## Funding Opportunities


Home / Funding Opportunities

DCCPS regularly funds new cancer control research. It also funds programs that help train people for careers in biomedical, behavioral, social, and clinical research. Explore current funding opportunities, as well as information about NIH's budget process, grant funding strategies and policies, and more.




### Funding Announcements

View a list of funding opportunities that are currently accepting applications.



### For New Grantees

Find resources for research, funding opportunities, and workshops that may be helpful to new and early-stage investigators.



### How to Apply

Find resources on the NIH grant application process, including application tips, forms, and instructions.

## EXPLORE MORE FUNDING

### Grant Policies

Learn about the terms and conditions of NIH grant awards, as well as NCI grant policies, guidelines, and descriptions.

### Archives

View a list of past requests for applications and program announcements compiled since 1995.

<https://cancercontrol.cancer.gov/funding.html>



**Hawaiian Value:**

**MĀLAMA:**

**“The value of stewardship. To take care of. To serve and to honor, to protect and care for.”**

*Mahalo*