



CRCHD Research Education Programs (R25)

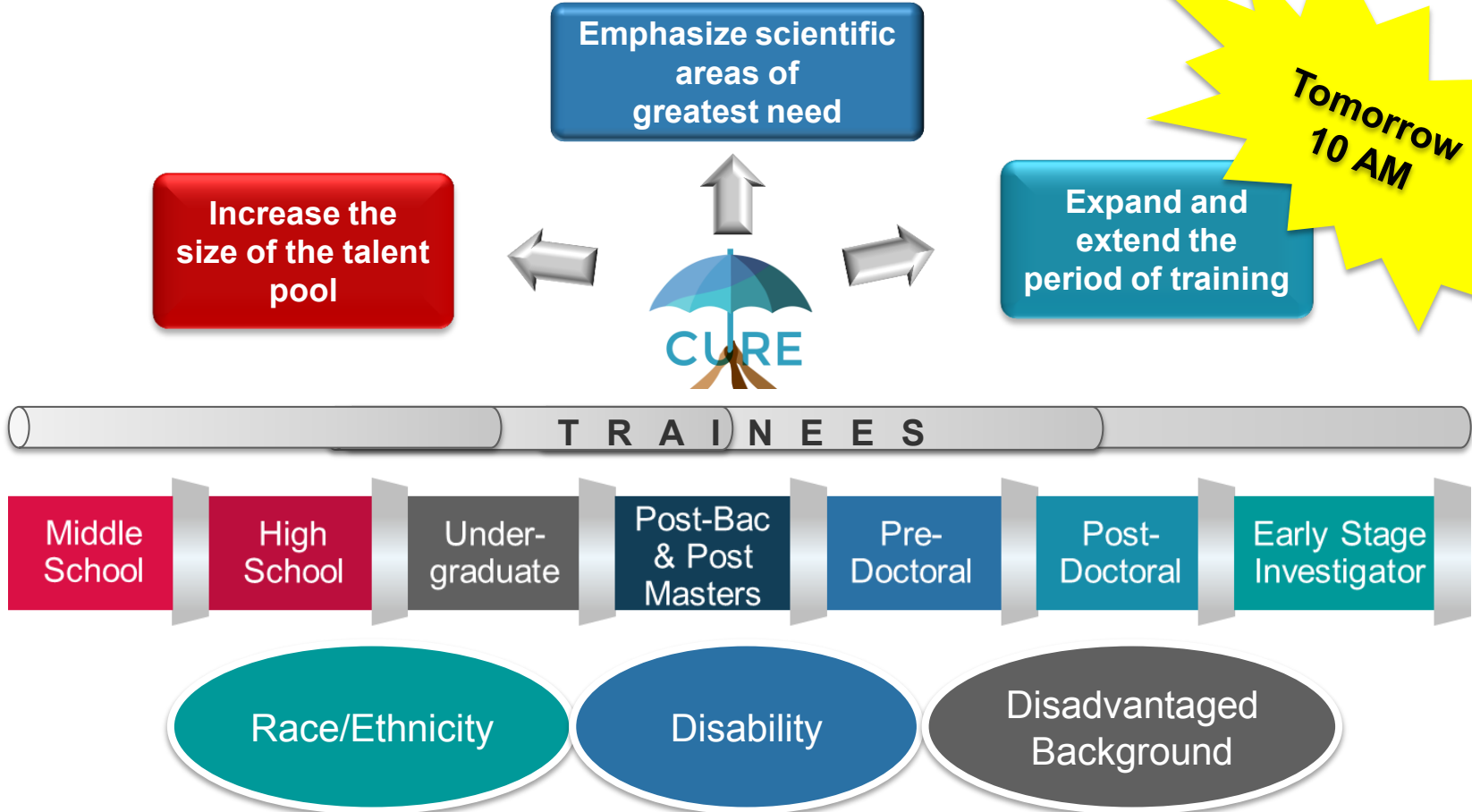
Alison Lin, PhD

Diversity Training Branch

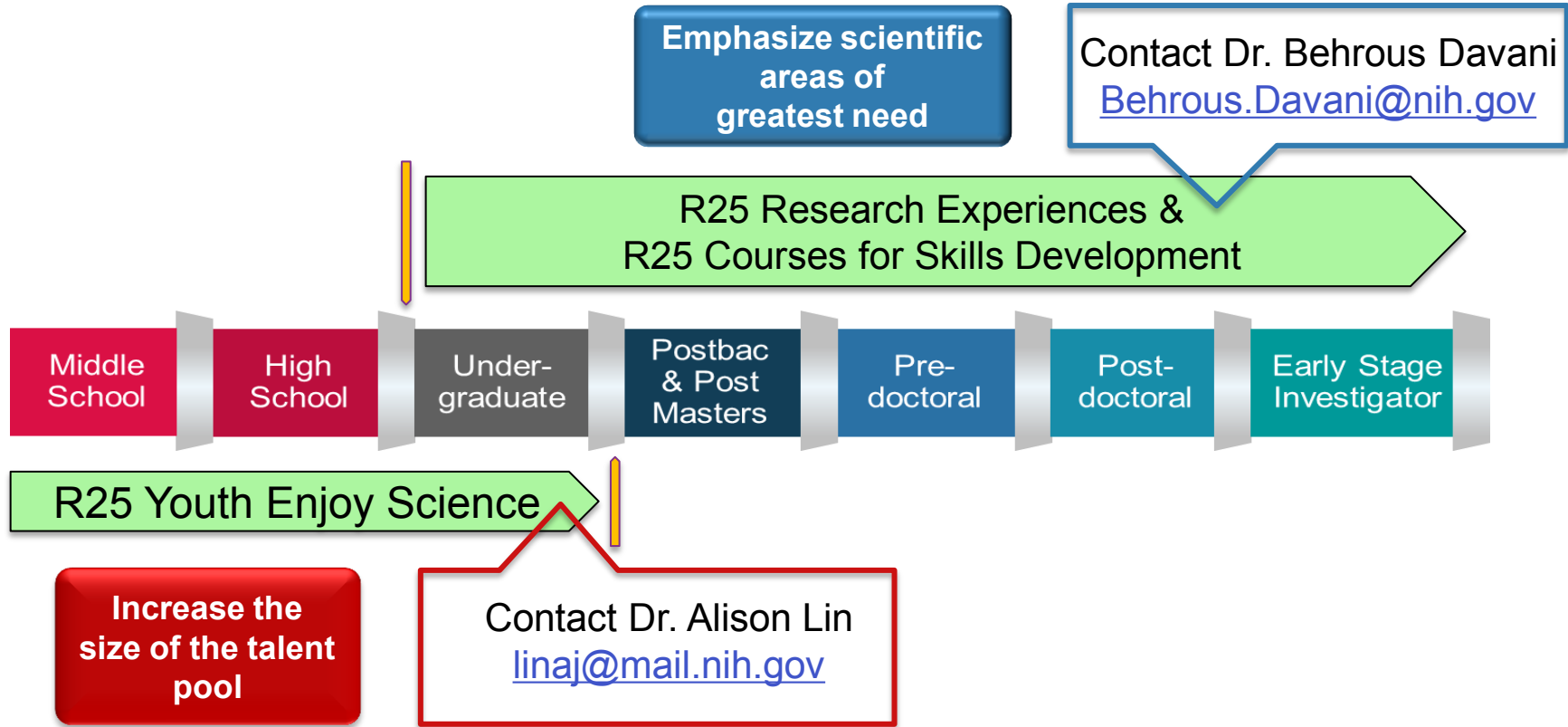
PACHE Program Meeting | July 23, 2018

| CENTER TO REDUCE
CANCER HEALTH DISPARITIES

Continuing Umbrella of Research Experiences (CURE)



CRCHD R25 Programs



Research Experiences & Courses for Skills Development: Diversity-Focused Companion FOAs to CCT R25 Programs

PAR-18-477

CREGP – *Courses for Skills Development*

PAR-18-478

CREGP – *Research Experiences*

PAR-18-476

CREGP – *Curriculum or Methods Development*

PAR-16-139

CREGP to Promote Diversity – *Courses for Skills Development*

PAR-16-138

CREGP to Promote Diversity – *Research Experiences*

CCT

CRCHD

*CREGP: Cancer Research Education Grants Program

Research Experiences and Courses for Skills Development to Promote Diversity

FOA	Participants & Budget	Activities & Commitment
<p>Cancer Research Education Grants Program to Promote Diversity – Research Experiences https://grants.nih.gov/grants/guide/pa-files/PAR-16-138.html</p>	<ul style="list-style-type: none"> • Undergraduate students • Graduate students • Medical, dental and other health professional students • Health care providers • Biomedical researchers • DC: Up to \$300K per yr. • Up to 5 years 	<ul style="list-style-type: none"> • Hands-on experience in lab or field • Full time for 10-15 weeks
<p>Cancer Research Education Grants Program to Promote Diversity – Courses for Skills Development https://grants.nih.gov/grants/guide/pa-files/PAR-16-139.html</p>		<ul style="list-style-type: none"> • Cancer education course (career skills courses allowed) • In-person, online or both • Max 15 weeks per year

Applications that address NCI and CRCHD priority areas are encouraged.

R25 YES Promotes Effective Early Intervention Strategies

Enhance the diversity of the biomedical, behavioral, and clinical research workforce

PAR-17-059 (<https://grants.nih.gov/grants/guide/pa-files/PAR-17-059.html>)

Purpose:

- Engage students from diverse backgrounds and their teachers in cancer research
- Inspire interest in biomedical sciences and cancer research
- Help envision cancer research as a career path
- Strengthen practical research and career skills

Participants (Two year, 3 mo. per yr. commitment)	<ul style="list-style-type: none">• Middle and high school students (Grades 6–12)• Undergraduate students• Middle and high school teachers• Undergraduate faculty• Student participants must be citizens, non-citizen nationals, or legal permanent residents of the U.S.
Institutions	Open to all institutions, not restricted to cancer centers

Each R25 YES Application Requires Three Activities

Activity	Description
Research Experiences	Individual, mentored research experience in a currently active cancer research project for high school and undergraduate students, and their teachers and faculty
Curriculum or Methods Development	<ul style="list-style-type: none"> ▪ Education tools for students ▪ Teacher/faculty participants develop activities to bring back to classroom
Outreach	<ul style="list-style-type: none"> ▪ <i>To students:</i> <ul style="list-style-type: none"> ▪ For Grades 6-8 students: engage in interactive activities that introduce them to cancer research in organized and systematic fashion ▪ For all students: <ul style="list-style-type: none"> ○ Increase awareness of the YES and facilitate recruitment ○ Enhance understanding of significance of Research Experiences ○ Strengthen academic and career skills ▪ <i>For students:</i> <ul style="list-style-type: none"> ▪ Meaningfully engage families, teachers, and communities ▪ <i>By students:</i> <ul style="list-style-type: none"> ▪ Education and dissemination of cancer-related information to family and community

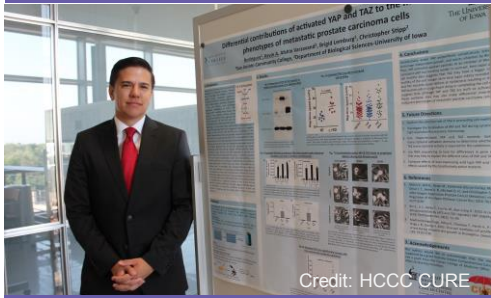
R25 YES Evaluation Basics

Activity	Evaluation
Research Experiences	<ul style="list-style-type: none"> ▪ Number and demographics of students ▪ Interest in cancer research ▪ Academic progress (graduation) ▪ Career progress (continuation in cancer and biomedical research fields; continuation in CURE)
Curriculum or Methods Development	<ul style="list-style-type: none"> ▪ Number and effectiveness of education tools, activities, and/or curricula developed and implemented ▪ Number of teacher/faculty participants
Outreach	<ul style="list-style-type: none"> ▪ Middle school student tracking (see above) ▪ Number and effectiveness of activities that: <ul style="list-style-type: none"> ▪ Promote understanding of cancer research or enhance career skills ▪ Support student participation in YES ▪ Are conducted by the students in education and dissemination of cancer-related information



Credit: MSKCC

Memorial Sloan Kettering CC Scholars



Credit: HCCC CURE

Holden CCC CURE Scholar



Credit: SC CURE

SC CURE Scholars

R25 YES Applications in FY 2017

- Total number of applications (Jan – Sept 2017): **31** (5 were awarded)

Participants Included	Number of Applications	Awards
Middle School Students	9	2
High School Students	23	5
Undergraduate Students	18	5
Teachers or Faculty	14	4

- To date, 13 out of 39 P30S have applied for R25 YES; 4 have been awarded
- In addition, 2 applications were from investigators in our PACHE program



Credit: COH

CURE Summer Students
City of Hope



Credit: MSKCC

Memorial Sloan Kettering CC Scholar



Credit: SC CURE

SC CURE Scholars



Credit: UNMC YES

Univ. of Nebraska Medical Center YES

Allowed Budget for R25 YES

- Maximum of \$500,000 direct cost per year **(should specifically correspond to proposed program strategy and approach; budget justification should be specific)**
- F & A: 8%
- Maximum project period: 5 years
- Personnel cost (including consultant): up to \$5,000 per participant in direct cost → **must specify number of expected participants**
- Participant cost: Participants are paid consistent with institution policy and:
 - Middle school students – not paid
 - High school students – minimum wage
 - Undergraduate students – no more than \$10 per hour
 - Teachers – no more than \$900 per week
- Research-related expense: up to \$1,500 per participant per year
- Housing allowance: average per participant per year cannot exceed \$1,000

R25 YES Application Should Have:

- Cohesive and integrated program design
 - An overall central theme
 - Solid connections between the different components
 - Feasibility for implementation
- Clearly identified and justified need
- Clear cancer focus
- Convincing recruitment plan
- Strong support activities, especially for pre-college participants
- Evaluation plan that corresponds with the program goals (which corresponds with need)
- Clear and feasible exit strategy for the participants

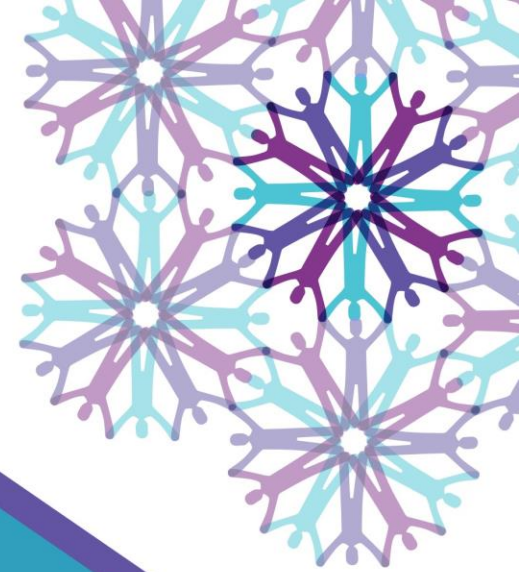


Important Dates for R25

Receipt Cycle	Letter of Intent*	Application Receipt Date	Initial Review	Council Review	Earliest Possible Start Date**
1	December 25	January 25	June/July	September/ October	December
2	April 25	May 25	October/ November	January/ February	April
3	August 25	September 25	February/ March	May/June	July

** LOIs are not required but strongly encouraged*

*** Start dates are determined by the availability of NCI funds and may not occur until well after the earliest possible start date.*



**NATIONAL
CANCER
INSTITUTE**

cancer.gov/crchd