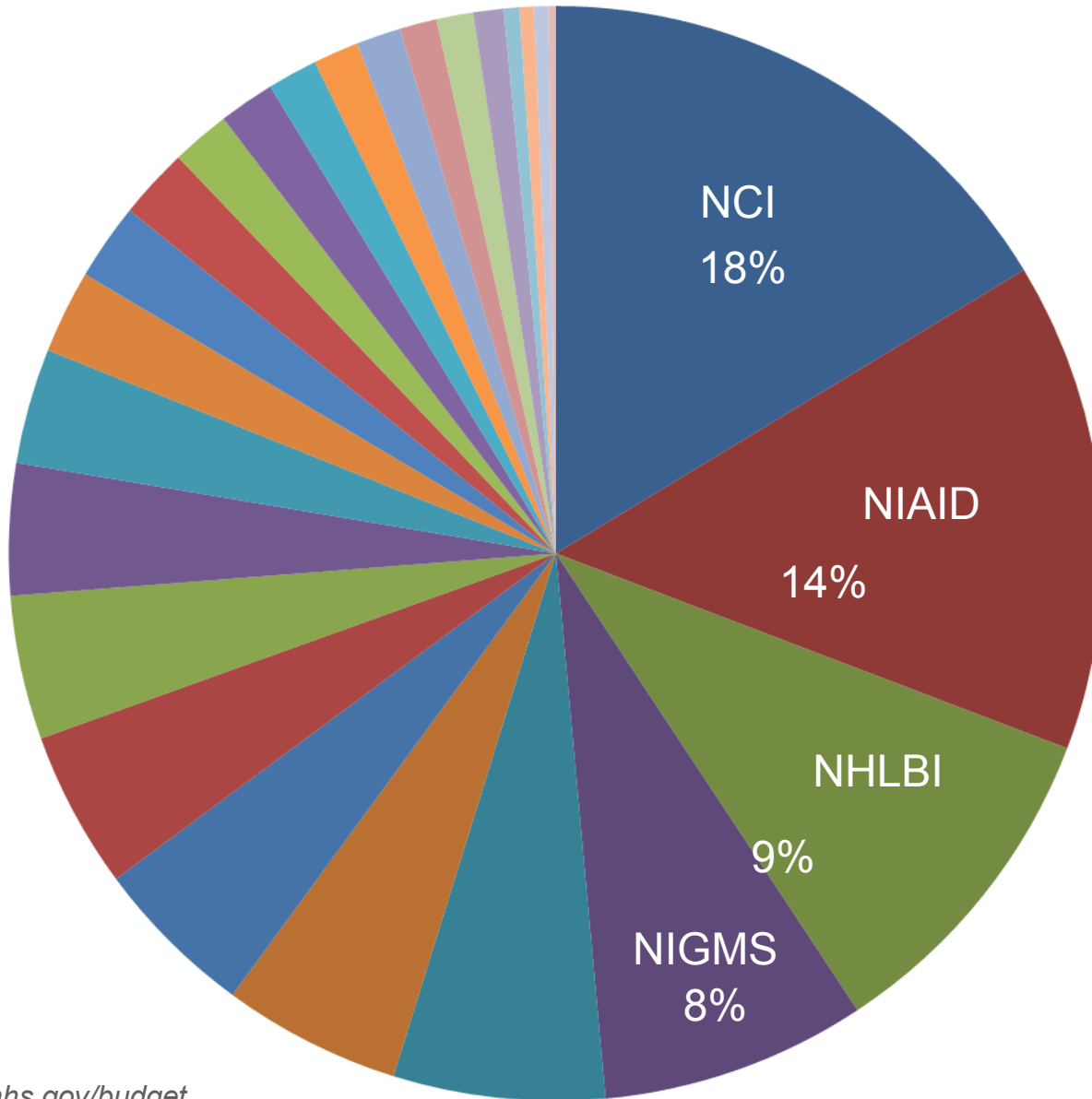


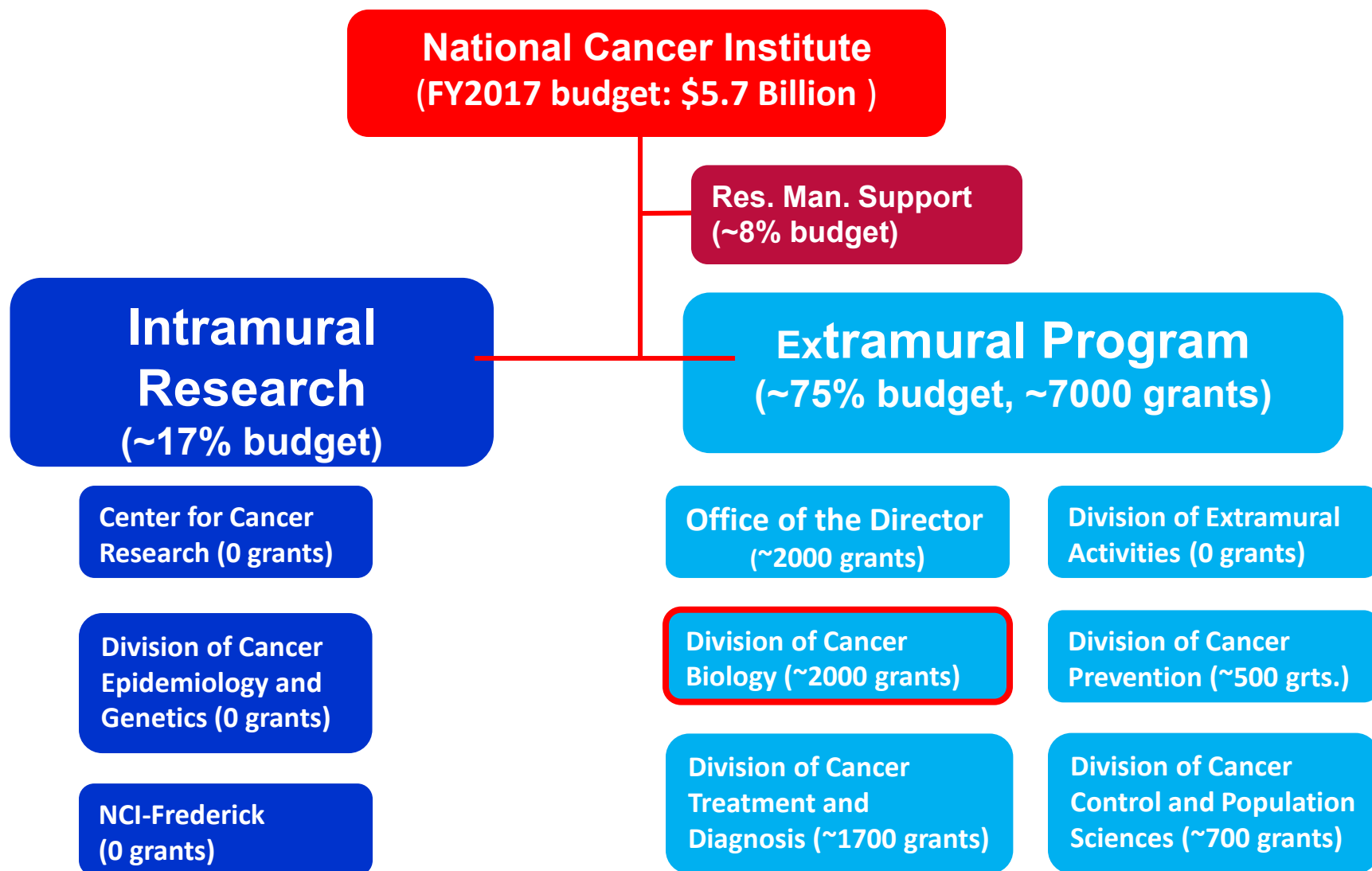
NCI Division of Cancer Biology: Basic and Pre-Translational Research Funding Opportunities

**Susan McCarthy, Ph.D.
July 23, 2018**

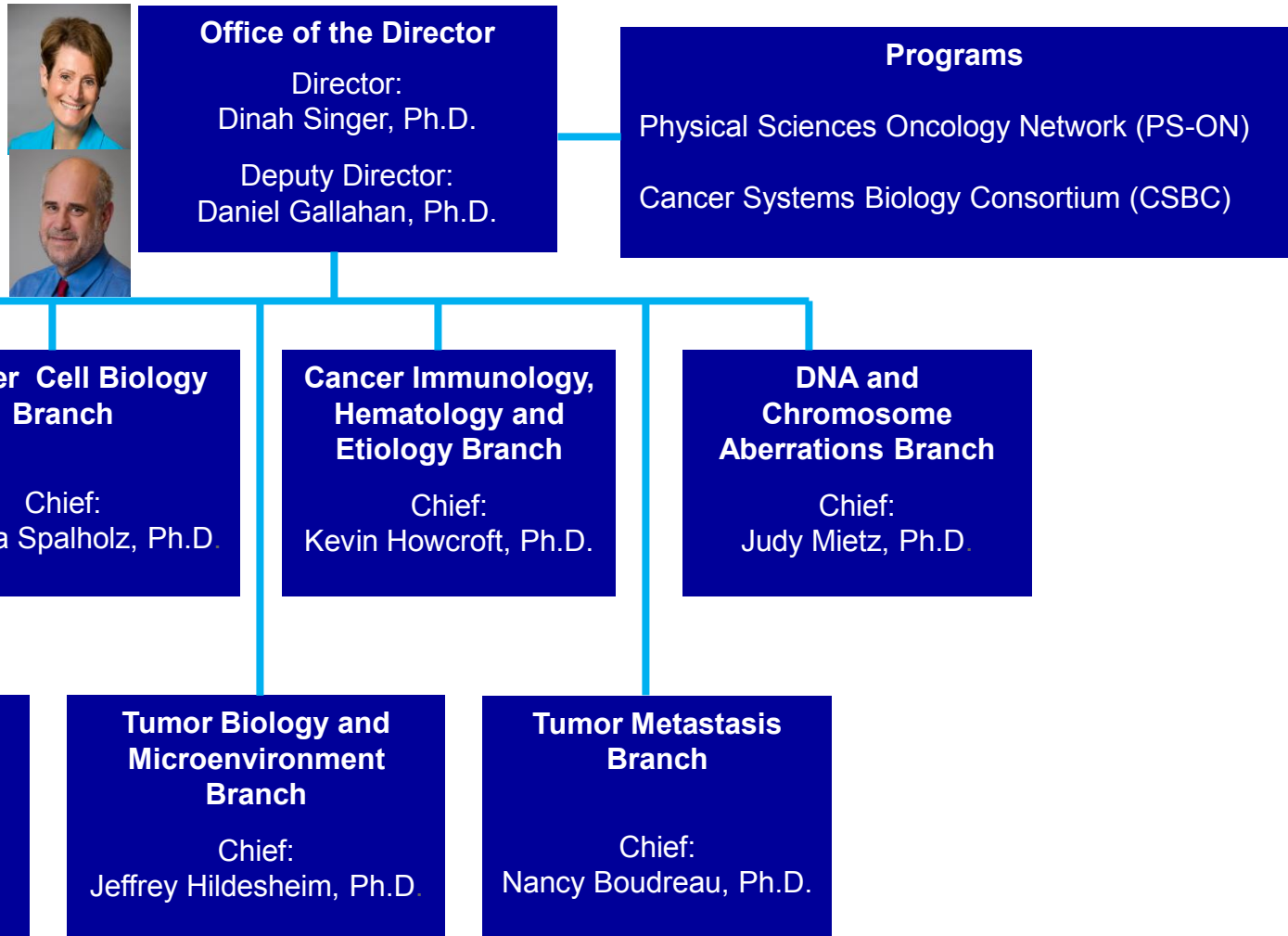
NIH Budget Allocation by Institute/Center



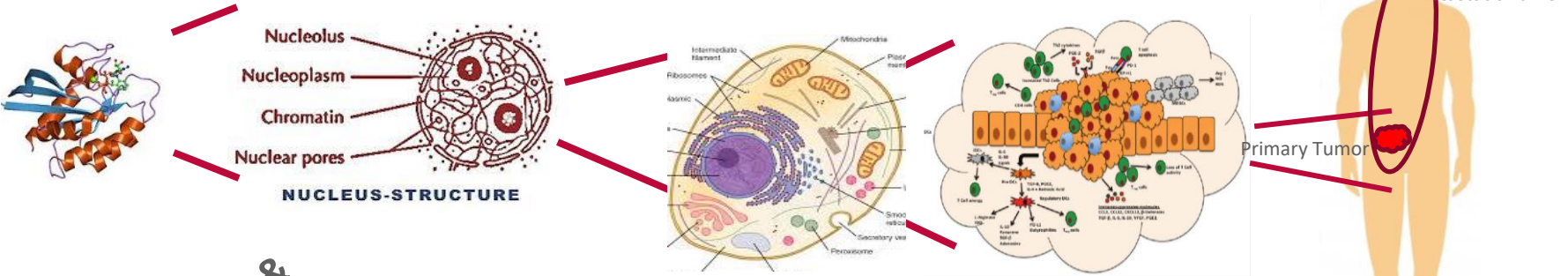
Organization of the National Cancer Institute



NCI Division of Cancer Biology



Conceptual Organization of the Division of Cancer Biology



Structural Biology & Molecular Applications

DNA & Chromosomal Aberrations

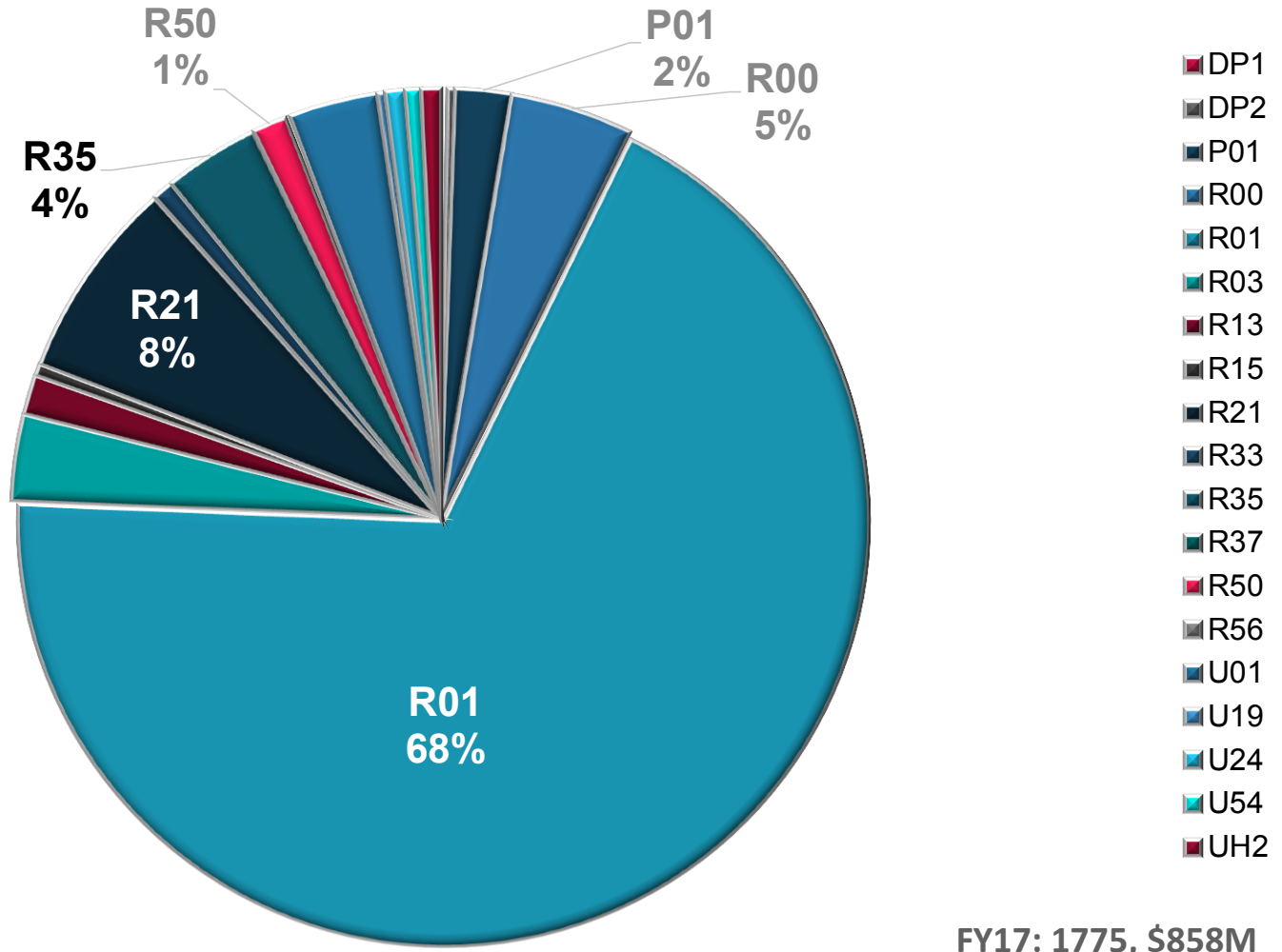
Cancer Cell Biology

Cancer Immunology, Hematology & Etiology

Tumor Biology & Microenvironment

Tumor Metastasis

DCB – Grant Award Portfolio by Mechanism (FY17)



FY17: 1775, \$858M

How Does the NIH Solicit Applications?

- Funding Opportunity Announcements (FOA) published through the NIH Guide (<http://grants.nih.gov/grants/guide/>)
- Parent Announcements cover basic mechanisms (R01; PA-16-160) <https://grants.nih.gov/grants/guide/pa-files/PA-16-160.html>
 - investigator-initiated research projects
- Special/Topical Announcements to fill gaps
 - Requests for Applications (RFA)
 - Program Announcement (PA)
 - Program Announcement with Special Review (PAR)
 - Program Announcement with Set-Aside (PAS)

<https://www.cancer.gov/grants-training/grants/funding-opportunities>

Partial List of Current DCB-sponsored FOAs

[PAR-15-331](#), PAR-15-332, PAR-15-333, PAR-15-334 Informatics Technology for Cancer Research

[PAR-16-344](#) Biological Comparisons in Patient-Derived Cancer Models

[PA-16-177](#) Pilot and Feasibility Studies Evaluating the Role of the Epitranscriptome

[PA-16-251](#), [PA-16-252](#) Gene Fusions in Pediatric Sarcomas

[PA-16-425](#), [PA-16-426](#) Research on Non-AIDS-defining or AIDS-defining Cancers

[PAR-16-226](#), [PAR-16-227](#) The Role of Mobile Genetic Elements in Cancer

[PAR-16-228](#), [PAR-16-229](#) Metabolic Reprogramming to Improve Immunotherapy

[PAR-16-245](#), [PAR-16-246](#) Neural Regulation of Cancer

[PAR-16-131](#) Cancer Systems Biology Consortium

[PAR-17-171](#) Enabling Biomimetic Tissue-Engineered Technologies for Cancer Research

[PAR-17-244](#), [PAR-17-245](#) Enhance Applicability of Mammalian Models for Translational Research

[PA-17-138](#) Collaborative Admin Supps on Fusion Oncoproteins as Drivers of Childhood Cancer

[PA-17-219](#), [PA-17-220](#) Mechanisms of Alcohol-Associated Cancers

[PA-17-459](#), [PA-17-460](#) Biology of Lung, and Head and Neck Preneoplasias

[PAR-17-150](#), [PAR-17-151](#) Mechanisms of Disparities in Chronic Liver Diseases and Cancer

[PAR-17-203](#), [PAR-17-204](#) Inter-organelle Communication in Cancer

[PAR-17-206](#), [PAR-17-207](#) Alliance of Glycobiologists for Cancer Research

[PAR-17-475](#), [PAR-17-476](#) Electronic Nicotine Delivery Systems (ENDS)

[RFA-CA-17-030](#) HIV/AIDS and the Tumor Niche



**NATIONAL
CANCER
INSTITUTE**

www.cancer.gov

www.cancer.gov/espanol