



Intramural Continuing Umbrella of Research Experiences Program

*Alison Lin, PhD
Program Director
June 29, 2018*

| CENTER TO REDUCE
CANCER HEALTH DISPARITIES

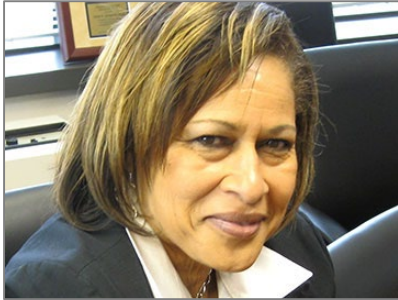
Intramural Continuing Umbrella of Research Experiences (iCURE)

iCURE is a new program that attracts students and scientists into the multidisciplinary environment of the NCI Intramural Research Program (IRP) and supports their mentored experiences.



Enhancing Diversity
in the NCI Intramural
Research Community

iCURE is a Collaboration between CRCHD and NCI Intramural Research Program (IRP)



"We are excited to expand the highly successful extramural CURE program into the intramural community. iCURE scholars will gain a valuable research experience and an understanding of how to navigate an NIH intramural research career path — and in the process, they will help enrich the intramural environment."

— *Sanya A. Springfield, Ph.D., CRCHD Director*



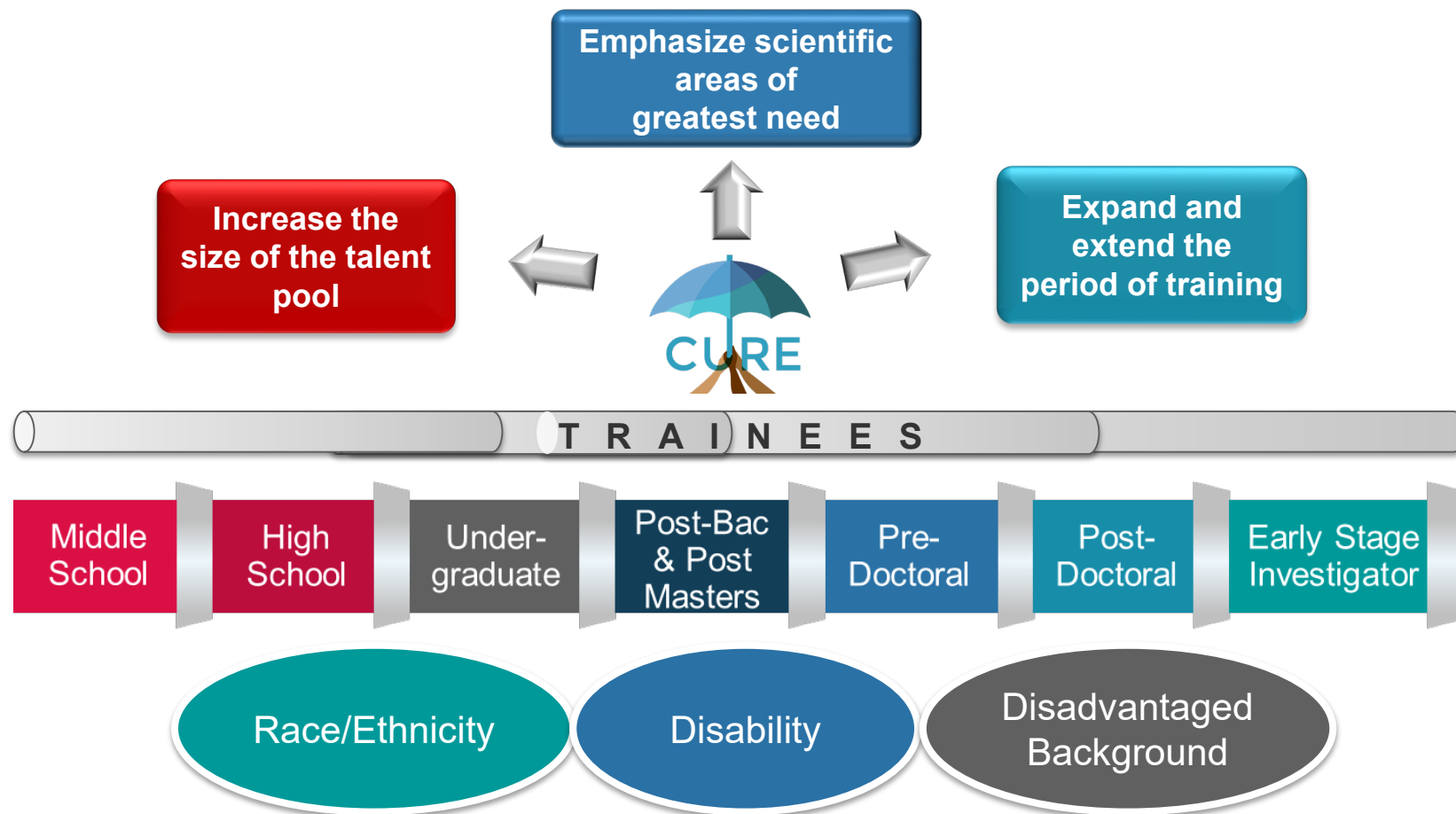
"We are looking forward to welcoming a diverse group of highly talented iCURE students and post-docs to our laboratories. Diversity of thought and culture is essential for the innovative and creative environment we pride ourselves on in the NCI intramural program."

— *Tom Misteli, Ph.D., CCR Director*

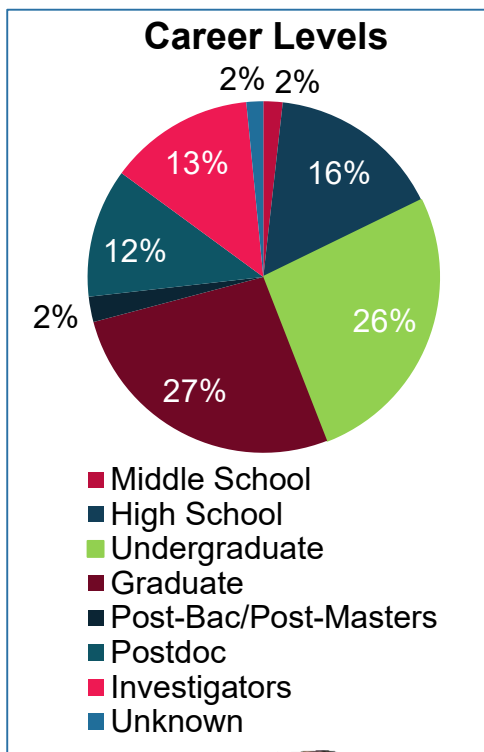
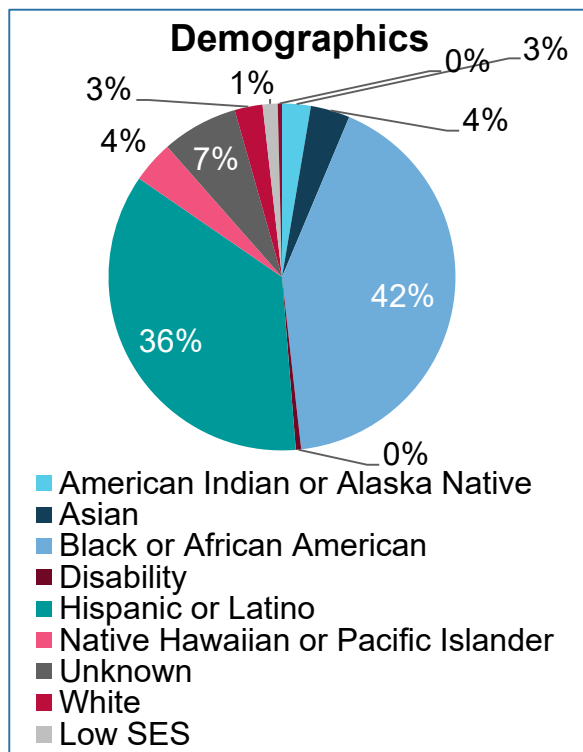
NIH Extramural and Intramural

- Extramural: primarily **administers and funds** research conducted **outside** of NIH at institutions across the nation
- Intramural: **conducts research inside** NIH on NIH campuses
 - NCI intramural: in Maryland
- **CURE** Program supports **extramural** research experiences
- **iCURE** Program supports **intramural** research experiences

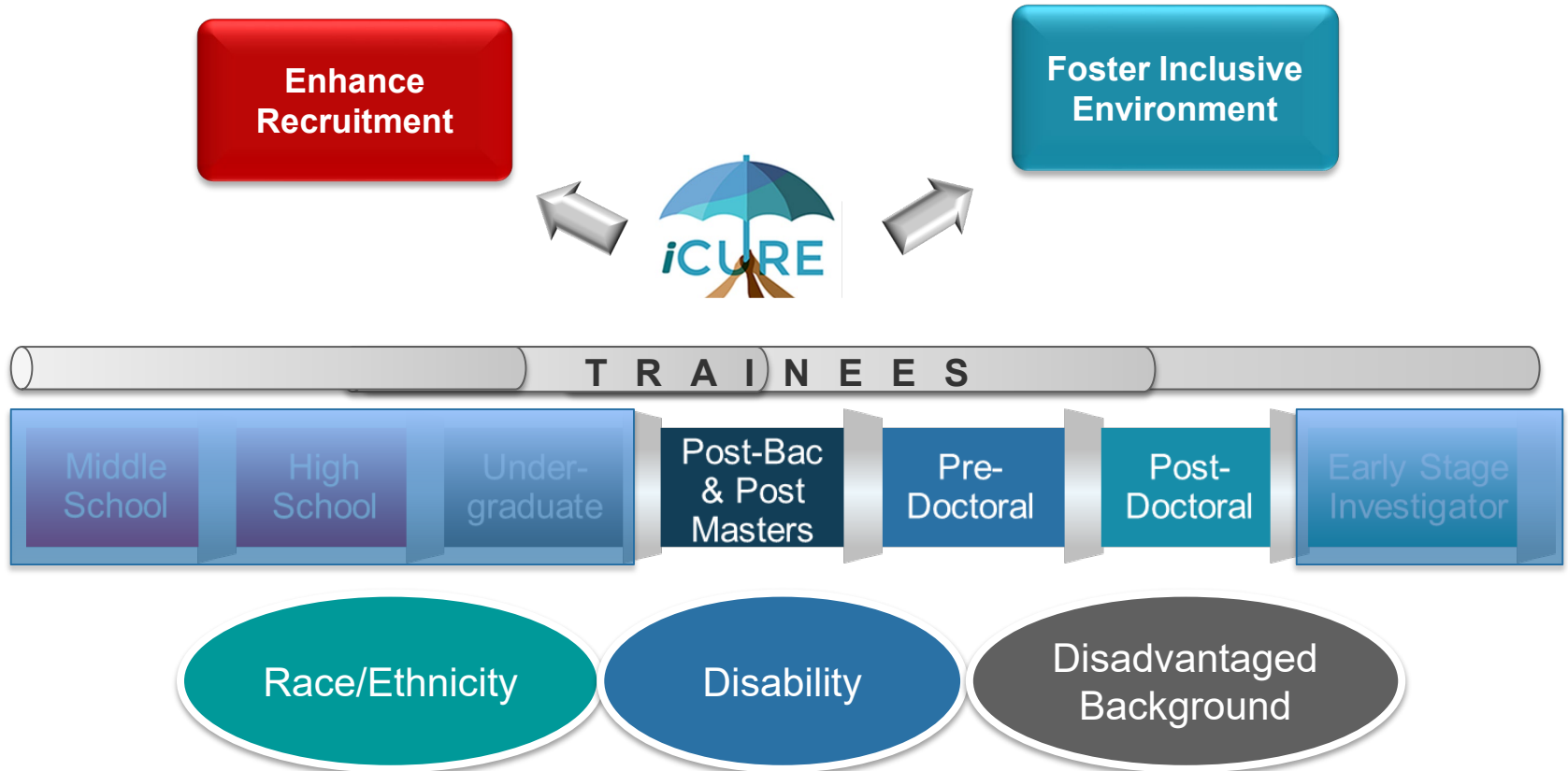
Continuing Umbrella of Research Experiences (CURE)



CURE Program (2001-2017): n = 4,072



iCURE Extends CURE into NCI Intramural Research Environment



iCURE Eligibility

iCURE scholars must be U.S. citizens, legal permanent residents, or citizen nationals

Post-baccalaureate (Incl. post-master's)

- Must meet both Postbac IRTA and iCURE eligibility criteria

Graduate Students

- Must currently be enrolled in a PhD or equivalent graduate program.

Postdoctoral Fellows

- Must have a PhD, MD, or equivalent by proposed iCURE start time
- No more than 5yrs of relevant research experience

NCI is particularly interested in encouraging applications from individuals from groups identified in NIH's Notice of Interest in Diversity ([NOT-OD-18-129](#)) as underrepresented in the biomedical, clinical, behavioral, and social sciences.

iCURE Supports Mentored Research Experiences

**Post-baccalaureate
(Incl. post-master's)**

**One-year research
experience awards**

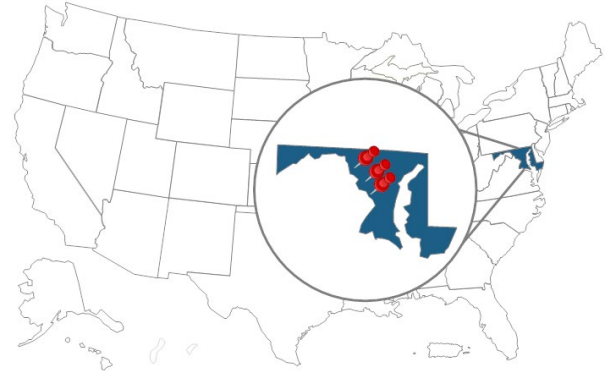
Graduate Students

**Two-year research
experience awards**

Postdoctoral Fellows

**Three-year
research
experience awards**

Research will be conducted in the multidisciplinary research environment of the NCI campuses in: **Bethesda, Rockville, and Frederick, Maryland.**



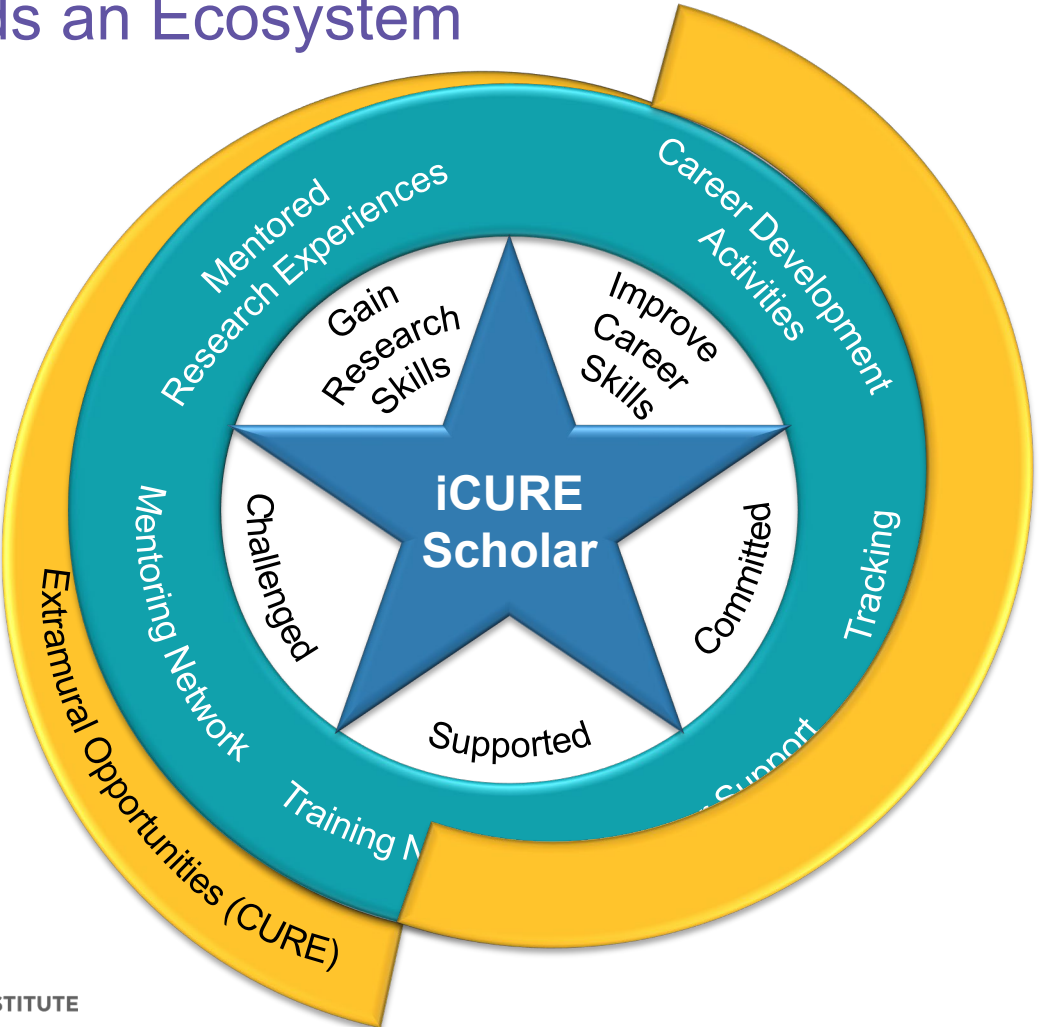
iCURE Research Environment: NCI IRP

- The NCI IRP maintains a strong focus on rare cancers and cancers in underserved populations worldwide, as well as emerging scientific opportunities in cancer research.
- IRP includes the **Center for Cancer Research (CCR)** and the **Division of Cancer Epidemiology and Genetics (DCEG)**.



CCR	DCEG
Conducts basic and clinical cancer research and develops breakthrough discoveries into novel therapeutic interventions for adults and children afflicted with cancer or HIV.	A global leader in cancer epidemiology and genetics research, and is uniquely positioned to conduct projects that are high risk in nature.

iCURE Builds an Ecosystem of Support



iCURE Applications

- Application for Fall 2019 will be open in Jan/Feb 2019
- Check iCURE website for updates

Post-baccalaureate (Incl. post-master's)

Submit online:

- Postbac IRTA Program

Email iCURE@nih.gov:

- iCURE supplemental application

Graduate Students

Email iCURE@nih.gov:

- Cover Letter
- CV
- Transcript
- 3 References

Postdoctoral Fellows

Email iCURE@nih.gov:

- Cover Letter
- CV (if currently a student)
- Transcript
- 3 References

iCURE Scholars Selection

- Applications will be reviewed based on candidate qualifications and potential match to NCI IRP
- Select group of applications will be forwarded to NCI IRP investigators
- CRCHD and IRP will work together to match PIs and iCURE candidates based on mutual research interests, qualifications of candidates and mentors, and assessment of potential fit
- Once matched, the PI and iCURE scholar will agree to a research and career development plan



Get Connected



cancer.gov/about-nci/organization/crchd/diversity-training/icure



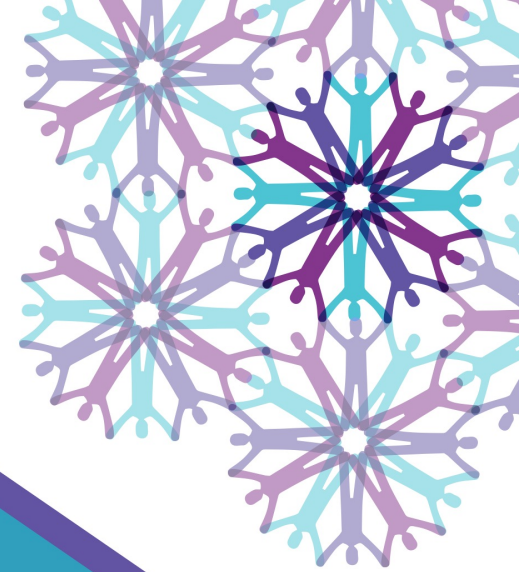
iCURE@nih.gov



@NCICRCHD
@NCIResearchCtr
@NCIEpiTraining



Enhancing Diversity
in the NCI Intramural
Research Community



**NATIONAL
CANCER
INSTITUTE**

cancer.gov/crchd