

# Professional Development Workshop and Mock Review

## Overview of the CURE

*Peter Ogunbiyi, PhD, DVM  
Chief, Diversity Training Branch  
NCI Center to Reduce Cancer Health Disparities*



“The best way to predict the future  
is to create it.”

- *Abraham Lincoln*

Continuing

Umbrella



Research

Experiences

HS

Undergrad

Predocutorial

Postdoctoral

Junior Investigator

Diversity Research  
Supplements

Re-Entry  
Supplements

Supplements to  
the CURE:

Cancer  
Center  
Grant: P30

NRSA  
Fellowships:  
F31  
NRSA  
Training  
Grants: T32S

R25TS:  
Cancer  
Prevention  
and Control  
Education

SCORE/MBRS

P50S Translational

Cancer Center  
P30 MD/Patient Oriented  
Res.

Clinical Oncology  
Training Grants:  
K12S

Career Awards:  
K01 K08 K23

Transition  
Career: K22

R  
0  
3

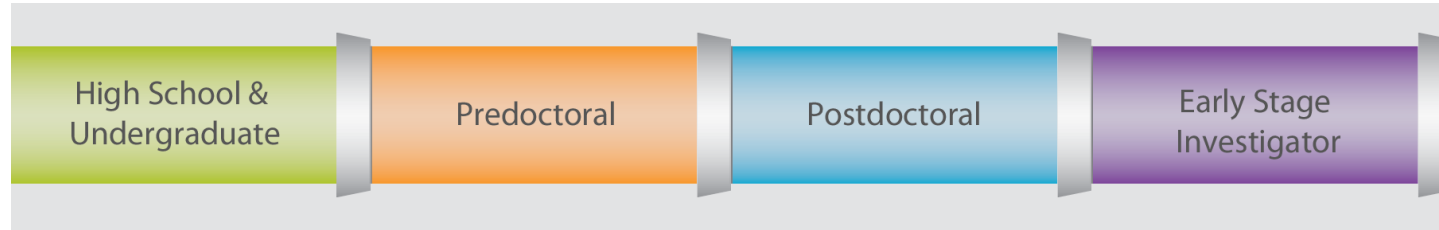
R  
2  
1

R

0

1

# CURE CONTINUUM OF TRAINING AND CAREER DEVELOPMENT OPPORTUNITIES



Diversity  
Research  
Supplements

High School  
Supplements  
Including ET  
CURE (P30S)

Diversity  
Research  
Supplements

National  
Research  
Service Awards  
(F31)

Diversity  
Research  
Supplements

Career  
Development  
Awards (K01,  
K08, K23)

Career Transition  
Awards (K22)

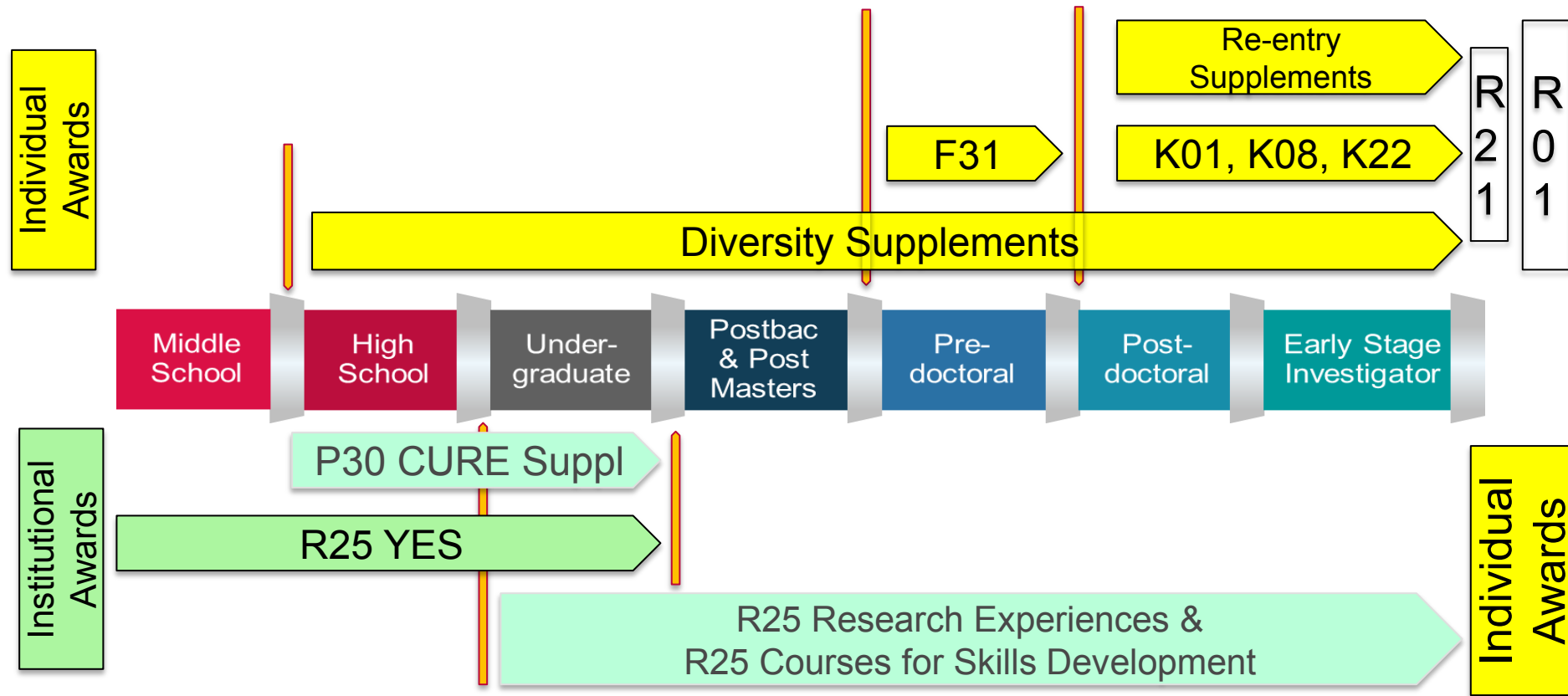
Diversity Research  
Supplements

Career Development  
Awards (K01, K08,  
K23)

Career Transition  
Awards (K22)

Exploratory/Develop  
ment Grants (R21)

# NCI Diversity Training - CURE Funding Mechanisms



# CURE and iCURE



## CURE GOALS

**Increase the size of the talent pool**



Well-prepared young students

**Emphasize scientific areas of greatest need**



Cancer health disparities  
Quantitative sciences etc.

**Expand and extend the period of training**



Competitive trainees for research independence



## iCURE GOALS

**Enhance the recruitment of qualified candidates to the NCI IRP**



Enhance IRP workforce diversity

**Ensure sustained interest in cancer research**



Promote career advancement

**Foster an inclusive environment in the NCI intramural community**



Encourage retention within IRP

# Understanding YOU in the CURE Program

Understand  
YOU

Everything starts with you ...  
And circles back to you ...  
And is mostly about you!

### **Self assessment:**

- Expertise areas
- Skills you want to develop
- Priorities in life

“Knowing  
yourself is the  
beginning of all  
wisdom”  
- *Aristotle*

### **Here and now:**

- What are the top three things you wish to gain from this workshop?



# Know your research Know your options

## Think Interest:

- What excites you most about research? Planning? Doing? Impact on people?

## Think Big Picture:

- What are the ultimate goals of my research?
- What has been done already?
- What can I investigate next?
- How does my work fit in the big picture?
- How does my work contribute to the improvement of human health?

## Think Interdisciplinary:

- Innovation
- Perspectives



## Your Institution

# Know your institution

### Think Infrastructure:

- Who are the leadership?
- What is the departmental structure?

### Think Opportunities and Expectations:

- What is the hiring process?
- What are the promotion possibilities?
- What are the expectations (committees, teaching, etc.)?

### Think Support:

- Mentors
- Finances
- Professional development



## Support Network

# Know your support network Build your support network Maintain your support network

### Think Personal:

- Family and friends
- Neighbors and community
- Mentors and advocates

### Think Professional:

- Mentors and advocates
- Colleagues and collaborators

### Think CRCHD:

- CURE program staff
- Training Navigation Officer
- GMaP



## Understand NCI

# Know your funding agency Understand the National Cancer Institute

### WHAT WE DO



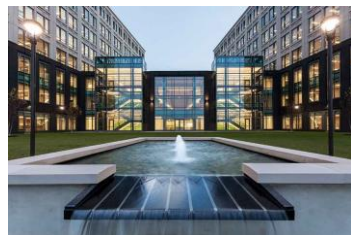
**Website:** <https://www.cancer.gov/about-nci>

## Organization:

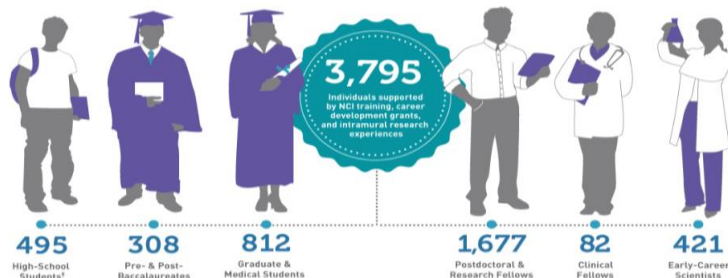
- Intramural: conduct research at NCI
- Extramural: support research across the nation

## Priorities:

- Research: talk to Program Staff to find out about program priorities
- Training



FY 2017



Understand  
CRCHD

## Know your professional “home”

### Diversity Training



### Partnerships

- Partnerships to Advance Cancer Health Equity (PACHE)

### Networks

Geographic  
Management of Cancer  
Health Disparities  
Program (GMaP)  
National Outreach  
Network (NON)

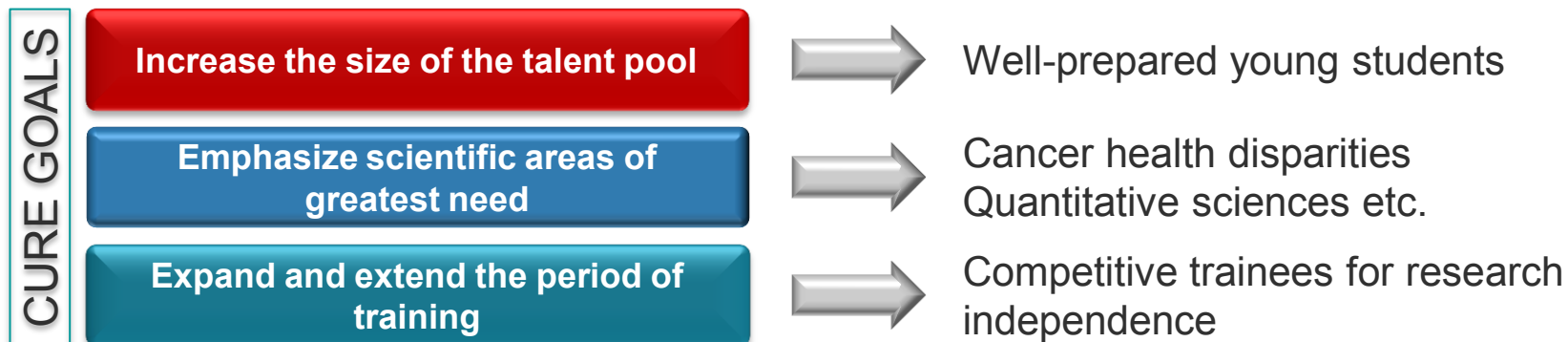
### Cancer Health Disparities Research

- Basic research
- Translational research



## Understand CURE

# Know your program: Continuing Umbrella of Research Experiences



Understand  
iCURE

# Know your program: Intramural CURE (iCURE)



iCURE GOALS

**Enhance the recruitment of qualified candidates to the NCI IRP**



Enhance IRP workforce diversity

**Ensure sustained interest in cancer research**



Promote career advancement

**Foster an inclusive environment in the NCI intramural community**



Encourage retention within IRP

**Post-baccalaureate  
(Incl. Post-master's)**

**One-year research  
experience awards**

**Graduate Students**

**Two-year research  
experience awards**

**Postdoctoral Fellows**

**Three-year  
research  
experience awards**

## YOU in CURE and iCURE

# What do the CURE and iCURE offer you?

- Research experiences
- Dedicated support from program staff
- Training navigation support
- Professional Development Workshop (you are here!)
- Mock Review (tomorrow!)
- GMaP
- Virtual hubs for networking
  - Supplements Café
  - iCURE Hub
  - PACHE Hub
  - YES HQ

*Stay in contact with your Program Director*





And We  
Come Back  
to YOU

Everything starts with you ...  
And circles back to you ...  
And is mostly about you!

“I am not a product of my circumstances. I am a product  
of my decisions.”

- *Stephen Covey*

“If opportunity doesn’t knock, build a door.”

- *Milton Berle*

**Here and now:**

- What are the top three things you wish to gain from this workshop?





**NATIONAL  
CANCER  
INSTITUTE**

[www.cancer.gov](http://www.cancer.gov)

[www.cancer.gov/espanol](http://www.cancer.gov/espanol)