

iCURE

Welcome Ceremony

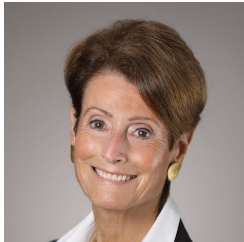
THURSDAY | OCTOBER 20



Intramural Continuing
Umbrella of Research
Experiences

“The *i*CURE program has enormous potential for identifying and training outstanding scientists from underrepresented minorities.”

— Douglas R. Lowy, MD, NCI Principal Deputy Director



“The *i*CURE program provides a unique opportunity for trainees to have a challenging and rewarding research experience and be mentored for a future career in cancer research. The scholars equally enrich NCI through their interests, passions, and perspectives.”

— Dinah S. Singer, PhD, Deputy Director, NCI Scientific Strategy and Development

“We are excited to expand the highly successful extramural CURE program into the intramural community. *i*CURE scholars will gain a valuable research experience and an understanding of how to navigate an NIH intramural research career path—and, in the process, they will help enrich the intramural environment.”

— Sanya A. Springfield, PhD, CRCHD Director



“We are looking forward to welcoming a diverse group of highly talented *i*CURE students and postdocs to our laboratories. Diversity of thought and culture is essential for the innovative and creative environment we pride ourselves on in the NCI intramural program.”

— Tom Misteli, PhD, CCR Director

“We have been fortunate to have an increasing number of *i*CURE scholars coming to DCEG. Diversity—of background, thought, and approach—improves the scientific community and the quality and impact of our research. Our trainees work collaboratively with DCEG’s investigators to uncover the causes of cancer in human populations.”

— Stephen J. Chanock, MD, DCEG Director



“Our Division offers a unique and robust training experience for cancer research trainees with a focus on cancer control and an emphasis on health equity and health disparities. Our outstanding mentors are experienced in working with trainees from diverse backgrounds and offer a range of topics to explore. Do consider joining us.”

— Katrina A.B. Goddard, PhD, DCCPS Director

2022 iCURE Welcome Ceremony

Agenda

October 20, 2022, 2:00–4:15 pm EDT
NIH Bethesda, Building 35, Rooms 610/620/630 & Atrium

2:00 PM

Opening Remarks

Dr. Jessica Calzola

iCURE Program Director, Office of the Director, NCI Center to Reduce Cancer Health Disparities

2:05 PM

Welcome to the NCI

Dr. Tom Misteli

Director, NCI Center for Cancer Research

Dr. Jackie A. Lavigne

Training Director, NCI Division of Cancer Epidemiology & Genetics

Dr. Katrina A.B. Goddard

Director, NCI Division of Cancer Control and Population Sciences

2:20 PM

Chapter 5: iCURE 2022

2:30 PM

Perspectives from an iCURE Mentor

Introduction by Francine Baker, *iCURE Scholar*

Dr. LeeAnn Bailey

Chief, Integrated Networks Branch, NCI Center to Reduce Cancer Health Disparities

2:40 PM

Keynote Speaker

Introduction by John Fenimore, *iCURE Scholar*

Dr. Andrea Apolo

Senior Investigator, Genitourinary Malignancies Branch, NCI Center for Cancer Research

2:55 PM

Closing Remarks

Dr. Behrouz Davani

Chief, Diversity Training Branch, NCI Center to Reduce Cancer Health Disparities

3:15 PM

Networking Poster Session and Reception

Atrium, Building 35

Meet the newest cohort of scholars at their posters. Scholars will be at their posters during the times noted below:

3:15–3:35 pm: Muzzammil Ahmadzada, Dr. Shantel Angstadt, Jazmyn Bess, Tishiya Carey, Enoc Grenados Centeno, Dr. Stephanie Chidester, Mercedes Cornelius-Muwanguzi, Dr. Toluleke Famuyiwa, Dr. John Fenimore, Dr. Annie Gilbert

3:40–4:15 pm: Adriana Hernandez, Maxwell Hogsmead, Erika Kaschak, Dr. Melissa Lucero, Dr. Steffie Pitts, Dr. Jeyshka Reyes-González, Dana Soika, Ekeoma Uzoukwu, Dr. Julia Medina Velázquez

**Light refreshments will be served during the Networking Poster Session and Reception.*

4:15 PM

Adjourn

2022 iCURE Scholars



Muzzammil Ahmadzada

Shahinaz Gadalla, MD, PhD
Clinical Genetics Branch

DCEG Shady Grove



Shantel Angstadt, PhD

Claudia M. Palena, PhD
Center for Immuno-Oncology

CCR Bethesda



Jazmyn Bess

Lisa Mirabello, PhD
Clinical Genetics Branch

Mia M. Gaudet, PhD
Trans-Divisional Research Program/
Connect Coordinating Center

DCEG Shady Grove



2022 iCURE Scholars

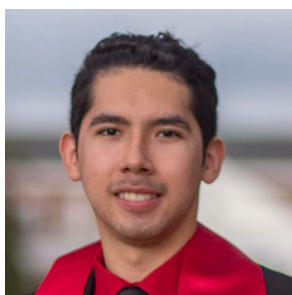
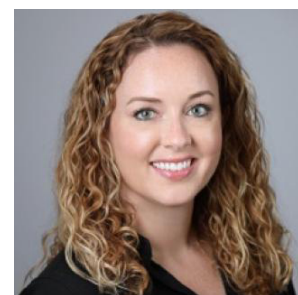


Tishiya Carey

Ramya Ramaswami, MBBS
HIV and AIDS Malignancy Branch

Kathryn A. Lurain, MD
HIV and AIDS Malignancy Branch

CCR Bethesda



Enoc Granados Centeno

Jagan R. Muppidi, MD, PhD
Lymphoid Malignancies Branch

CCR Bethesda



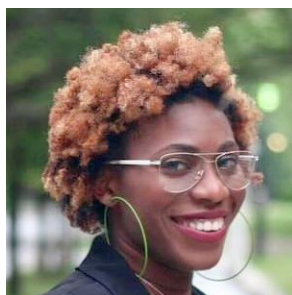
Stephanie Chidester, PhD

Jennifer Clare Jones, MD, PhD
Laboratory of Pathology

CCR Bethesda



2022 iCURE Scholars



Mercedes Cornelius-Muwanguzi

Natalie Porat-Shliom, PhD
Thoracic and GI Malignancies Branch

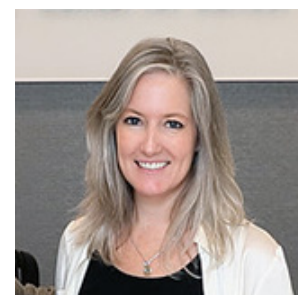
CCR Bethesda



Toluleke Famuyiwa, PhD

Mary F. Kearney, PhD
HIV Dynamics and Replication Program

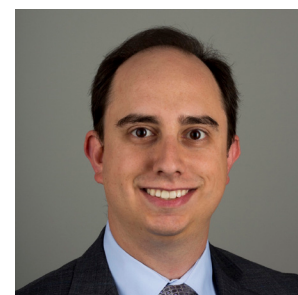
CCR Frederick



John Fenimore, PhD

Adam G. Sowalsky, PhD
Laboratory of Genitourinary Cancer Pathogenesis

CCR Bethesda



Annie Gilbert, PhD

Yamini Dalal, PhD
Laboratory of Receptor Biology and Gene Expression

CCR Bethesda



2022 iCURE Scholars



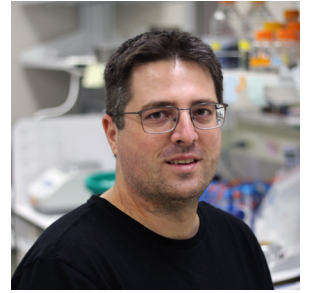
Adrianna Hernandez

Eugene Valkov, DPhil
RNA Biology Laboratory

CCR Frederick

Astrid D. Haase, MD, PhD
Laboratory of Cell & Molecular Biology

NIDDK, NIH Bethesda



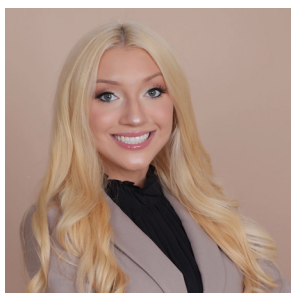
Maxwell Hogshead

Ludmila Prokunina-Olsson, PhD
Laboratory of Translational Genomics

DCEG Shady Grove



2022 iCURE Scholars

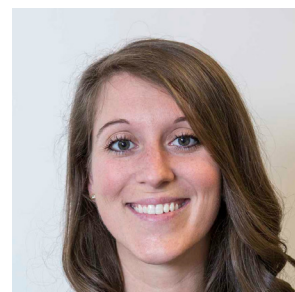


Erika Kaschak

Brigitte C. Widemann, MD
Pediatric Oncology Branch

Mary Frances Wedekind, DO
Pediatric Oncology Branch

CCR Bethesda



Melissa Lucero, PhD

Martin J. Schnermann, PhD
Chemical Biology Laboratory

CCR Frederick



Christine Muli, PhD

Kylie J. Walters, PhD
Center for Structural Biology

CCR Frederick



2022 iCURE Scholars



Steffie Pitts, PhD

Jeffrey Schlom, PhD
Center for Immuno-Oncology

CCR Bethesda



Jeyska Reyes-González, PhD

Rosa Nguyen, MD, PhD
Pediatric Oncology Branch

CCR Bethesda



Dana Soika

Tim F. Greten, MD
Thoracic and GI Malignancies Branch

CCR Bethesda



Ekeoma Uzoukwu

Jay A. Berzofsky, MD, PhD
Vaccine Branch

CCR Bethesda



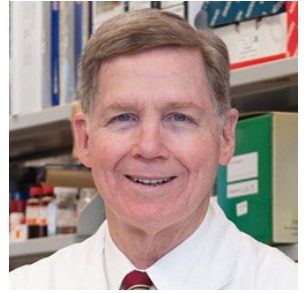
2022 iCURE Scholars



Julia Medina Velázquez, PhD

W. Marston Linehan, MD
Urologic Oncology Branch

CCR Bethesda



Corey Young, PhD

Mitchell Machiela, ScD
Integrative Tumor Epidemiology Branch

DCEG Shady Grove



Speaker Bio



Dr. Andrea Apolo

*Senior Investigator, Genitourinary Malignancies Branch,
NCI Center for Cancer Research*

Dr. Apolo is a medical oncologist dedicated to improving the lives of patients with genitourinary tumors. She designs and implements clinical trials to test novel agents for the treatment of urologic cancers. Her research focuses on developing targeted therapies for bladder cancer and rare genitourinary tumors, including immunotherapies, angiogenesis inhibitors, and agents that target MET, and in identifying molecular alterations that will serve as targets for individualized treatment strategies.

iCURE Program Team & Workgroup

iCURE Program Team

(NCI Center to Reduce Cancer Health Disparities)



Dr. Jessica Calzola
Program Director



Dr. Gregory Adams, Jr.
Program Director



Dawn Reid
Program Specialist



Katelyn Garfinkel
Sr. Administrative Assistant

iCURE Workgroup Members

(NCI)

Dr. LeeAnn Bailey, Center to Reduce Cancer Health Disparities

Vi Black, Center for Cancer Training

Dr. Chanelle Case Borden, Center for Cancer Training

Dr. Shauna Clark, Center for Cancer Research

Mary Custer, Center for Cancer Research

Erika Ginsburg, Center for Cancer Training

Dr. Jackie A. Lavigne, Division of Cancer Epidemiology & Genetics

Dr. Rick Moser, Division of Cancer Control and Population Sciences

Diane Wigfield, Division of Cancer Epidemiology & Genetics

Acknowledgements



The *iCURE* Program wants to express its genuine appreciation and gratitude to the many people who help *iCURE* continue to grow and thrive, including NCI leadership, NCI Principal Investigators, NCI and NIH program staff, *iCURE* scholar mentors, the *iCURE* Workgroup, and our program champions for their support these past 5 years. The *iCURE* Program and the success of each *iCURE* scholar is the product of a community of support.



The Foundation for Advanced Education in the Sciences (FAES) is proud to support the outstanding science at NCI and offer condensed online courses and workshops for scientists.

With more than 100 academic courses each year, FAES provides opportunities to deepen understanding and develop skills and expertise across biomedical research disciplines.

Learn about [Fall 2022 courses](#) and register for programs at education.faes.org.

Enhancing Diversity in the NCI
Intramural Research Community



Intramural Continuing
Umbrella of Research
Experiences

✉ icure@nih.gov

🌐 cancer.gov/crchd

🐦 @NCICRCHD | @NCIResearchCtr | @NCIEpiTraining